



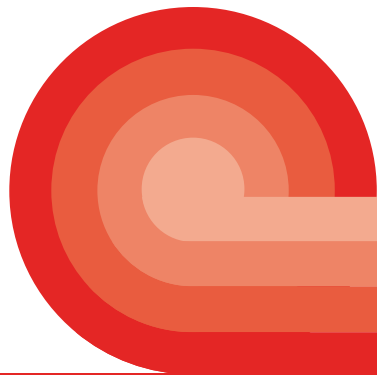
2021 CATALOG

BETTER PRODUCTS. BETTER WORLD.



# BETTER PRODUCTS. BETTER WORLD

We love the balance the bicycle brings to the world and its power to make people, communities and the planet healthier. In addition to creating products that make cycling safer and more enjoyable, we pledge time, resources and profits to organizations working for sustainable transportation solutions.



## COME RIDE WITH US.



# ADVOCACY IN ACTION

We believe bicycles add vibrancy to our communities. When we're out in the world pedaling around, we're happier and healthier and more deeply connected to the people and places within our neighborhoods.

We dream about the day when all towns and cities are more bicycle-friendly and that's why we give time, resources and profits to organizations working for sustainable transportation solutions.

PLANET BIKE IS A PROUD MEMBER OF THE FOLLOWING ORGANIZATIONS:



WASHINGTON  
AREA  
BICYCLIST  
ASSOCIATION



Adventure Cycling Association



INTERNATIONAL MOUNTAIN BICYCLING ASSOCIATION

PLANET BIKE IS PROUD TO SUPPORT THE FOLLOWING ORGANIZATIONS:



6100 S. Blackstone Ave, Chicago, Illinois 60637



# CONTENTS

This PDF is interactive.  
Click one of the links below  
to go to that product section.

## BIKE LIGHTS

Headlights  
Tail Lights  
Side Lights  
Combo Sets

## BIKE FENDERS

Full Fenders  
Recumbent  
Fat Tire Fenders  
Fast Mount Fenders

## BIKE COMPUTERS

## BIKE PUMPS + CO2

Floor Pumps  
Mini Pumps  
Suspension Pumps  
Tire Gauges  
CO2 Inflators + Replacement  
Cartridges

## BIKE LOCKS + CABLES

## BIKE SEATS + BIKE BAGS

Saddles  
Saddle Covers  
Bike Bags

## BIKE TIRE REPAIR KITS

## CYCLING GLOVES + SHOE COVERS

## HANDLEBAR TAPE & GRIPS

Tape  
Gel Pads  
Grips

## BIKE BELLS

## BIKE RACKS

## WATER BOTTLE CAGES



# BIKE HEADLIGHTS



Planet Bike builds headlights that are durable, easy to use, versatile and bright! These lights give you the power to light up the night and even help keep you visible during the day.

## Headlight features:

- Secure bracketing systems that adjust or remove in seconds
- Brackets fit up to 31.8mm handlebars
- Multiple light modes for increased safety during day or night time
- High quality CREE and Nichia LEDs
- Long run times from rechargeable lithium or readily available batteries

## CURRENT 500 E-BIKE HEADLIGHT (3500)



### Hardwired 500 lumen LED E-bike headlight

- Path-friendly Clean Beam™ horizontal cut-off lens for courteous, anti-glare illumination
- OSRAM KW H2L531.TE LED provides a 500 lumen high power beam
- FL1 Tested - Steady mode (500 lm)
- Dust and water resistance rated IPX6 standard
- Includes hardware for Bosch e-bike attachment and can be modified to fit Toshiba and Shimano batteries
- Mounts to e-bike front fork brake bolt and two pivot points allow for angle adjustment up to 45 degrees
- Compatible with any 6V-15V e-bike system
- Cable length 56"
- 116 grams

## BLAZE 800 SLX (3155)



### Rechargeable 800 lumen LED headlight w/ Clean Beam™ cut-off lens

- Path-friendly Clean Beam™ horizontal cut-off lens for courteous, anti-glare illumination
- Cree XPL2 LED provides high, medium and low power beam along with Courtesy™ & Superflash™ modes
- FL1 Tested – Run times: 1.5 hrs (high - 800 lm), 3.7 hrs (medium - 400 lm), 6 hrs (low - 200 lm), 16 hrs (Courtesy™ 160-270 lm) and 32 hrs (Superflash™ - 800 lm)
- Dust & water resistance rated to IP66 standard
- Sanyo 3350 mAh lithium ion battery charges in 6.3 hours with micro USB cable (included)
- QuickTwist™ mount adjusts or removes without tools
- 145 grams

## BLAZE 600 SLX (3154)



### Rechargeable 600 lumen LED headlight w/ Clean Beam™ cut-off lens

- Path-friendly Clean Beam™ horizontal cut-off lens for courteous, anti-glare illumination
- Cree XPL2 LED provides high, medium and low power beams along with Courtesy™ & Superflash™ modes
- FL1 Tested – Run times: 1.8 hrs (high - 600 lm), 3.7 hrs (medium - 300 lm), 8 hrs (low - 150 lm), 20 hrs (Courtesy™ 150-250 lm) and 40 hrs (Superflash™ - 600 lm)
- Dust & water resistance rated to IP66 standard
- Sanyo 2600 mAh lithium ion battery charges in 5 hours with micro USB cable (included)
- QuickTwist™ mount adjusts or removes without tools
- 145 grams

## BLAZE 400 SLX (3153)



### Rechargeable 400 lumen LED headlight w/ Clean Beam™ cut-off lens

- Path-friendly Clean Beam™ horizontal cut-off lens for courteous, anti-glare illumination
- Cree XPG2 LED provides high and low power beam along with Courtesy™ & Superflash™ modes
- FL1 Tested – Run times: 1.5 hrs (high - 400 lm), 4 hrs (low - 200 lm), 13 hrs (Courtesy™ 150-250 lm) and 30 hrs (Superflash™ - 400 lm)
- Dust & water resistance rated to IP66 standard
- 2200 mAh lithium ion battery charges in 3.5 hours with micro USB cable (included)
- QuickTwist™ bracket mounts, adjusts or removes without tools
- 145 grams

## BLAZE 210 SL (3175)



### Rechargeable 210 lumen headlight + amber side lights

- Cree XPG2 LED provides high and low power beam along with Courtesy™ & Superflash™ modes
- FL1 Tested - Run times: 1.4 hrs (high - 210 lm), 3 hrs (low - 120 lm), 5 hrs (Courtesy™ - 65-185 lm) and 21 hrs (Superflash™ - 210 lm)
- Amber side lights provide 275° of visibility
- Water resistance rated to IPX6 standard
- 1000 mAh lithium polymer battery charges in 3 hours with micro USB cable (included)
- QuickTwist™ bracket mounts, adjusts or removes without tools
- 88 grams

## BLAZE 150 (3184)



### 150 lumen headlight + amber side lights

- Cree XP-E2 LED provides high and low power beam along with Superflash™ mode
- FL1 Tested - Run times: 5 hrs (high - 150 lm), 11 hrs (low - 80 lm) and 62 hrs (Superflash™ - 150 lm)
- Amber side lights provide 275° of visibility
- Water resistance rated to IPX6 standard
- 2 AA batteries (included)
- QuickTwist™ bracket mounts, adjusts or removes without tools
- 120 grams

## BLAZE DYNAMO SL (3049)



### 150 lumen dynamo headlight + amber side lights

- Cree XP-E2 LED provides high and low power beam along with Courtesy™ & Superflash™ modes
- Max lumen output: 150 lm
- Amber side lights provide 275° of visibility
- For use with 6v, 2.4 or 3 watt generator hubs (not included)
- Power reserve function keeps light working when you stop
- QuickTwist™ bracket mounts, adjusts or removes without tools
- 118 grams

## BEAMER 80 (3093)



### Compact 80 lumen headlight with Courtesy™ pulse

- High output surface mounted LED provides high power beam along with Courtesy™ & Superflash™ modes
- FL1 Tested - Run times: 6.5 hrs (High - 80 lm), 24 hrs (Courtesy™ - 24-72 lm) and up to 70 hrs (Superflash™ - 80 lm)
- Provides 130° of visibility
- Water resistance rated to IPX5 standard
- 2 AAA batteries (included)
- A3 cam™ mount adjusts or removes without tools
- 63 grams

## BEAMER 3 (3029)



### 3 LED safety headlight

- 3 Nichia 5mm LEDs provide steady and flashing modes
- FL1 Tested - Run times: 46 hrs (steady - 12 lm) and up to 100 hrs (flashing - 12 lm)
- Side cut outs provide 220° of visibility
- Water resistance rated to IPX6 standard
- 2 AA batteries (included)
- QuickTwist™ bracket mounts, adjusts or removes in seconds without tools.
- 116 grams

## SPOK 50 USB HEADLIGHT (3258)



### Fast mount rechargeable head light

- High output surface mounted LED provides steady, Courtesy™ & Superflash™ modes
- FL1 tested –run times: 2.5 hrs (steady – 50 lm), 3.5 hrs (Courtesy™ – 14-45 lm) & up to 14 hrs (Superflash™ – 50 lm)
- Side cut outs provide 270° of visibility
- Dust & water resistance rated to IP54 standard
- 270 mAh lithium polymer battery charges in 2 hours with micro USB cable (included)
- Diminutive size and fast mounting rubber strap mounts to multiple mounting locations in seconds without tools
- 25 grams

## SPOK HEADLIGHT (3058)



### Fast mounting safety light

- High output surface mounted LED provides steady and flashing modes
- FL1 Tested – Run times: 8 hrs (steady - 20 lm) and up to 16 hrs (flashing - 20 lm)
- Side cut outs provide 200° of visibility
- 1 CR2032 battery (included)
- Rubber strap mounts to multiple mounting locations in seconds without tools
- Hooded beam keeps light out of the cyclist's eyes
- 18 grams

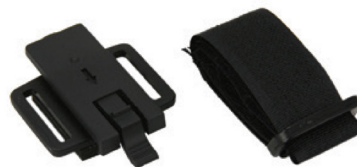
## QUICK TWIST™ BRACKET (3102)



### Quick mount headlight bracket

- Fits 25.4-31.8mm handlebars
- Compatible with all Blaze and Beamer 1 & 3 headlights

## HELMET BRACKET (3101)



### Quick mount helmet bracket for headlights

- Mounts front light to a helmet
- Compatible with Beamer 1, Beamer 3, Blaze 45, Blaze 150 SL and Blaze 210 SL

## QUICK STRAP HEADLIGHT BRACKET (3116)



### Quick mount headlight bracket with rubber strap

- Fits 25.4-35mm handlebars
- Compatible with all Blaze and Beamer 1 & 3 headlights

## FORK MOUNT BIKE HEADLIGHT BRACKET (3117)



### Bolt-on fork crown headlight bracket

- Planet Bike specific platform works with most Planet Bike headlights
- Converts to a 26.2mm universal mount to fit most headlight mounting systems
- Compatible with all Blaze, Beamer and Spok headlights



## Refurbish, not rubbish!

We're committed to keeping our products on the road and out of the landfill and that's why we have designed them to be easily rebuildable and we offer a comprehensive catalog of replacement parts to help extend the life of our products. Visit [www.planetbike.com](http://www.planetbike.com) to see a full listing of small parts.

# BIKE TAIL LIGHTS



Whether you're biking home from work, on a training ride, or out for a late night snack, we build our tail lights to keep you visible and safe every time you hop on your bike.

## Tail light features:

- Bike and clip mounts allow for various mounting options
- High quality, super bright LEDs
- Steady or flashing modes for safety
- Long run times from rechargeable lithium or readily available batteries
- Ultra compact cases are weatherproof, lightweight and durable



## ROJO 100 (3099)



**NEW!**

### Rechargeable tail light for All Day & Night visibility

- 2 high output Cree XB-D LEDs provide four modes for every kind of ride (Steady, Pulse™, Courtesy™ & Superflash Turbo™ settings)
- FL1 Tested – Run times: 5 hrs (Steady – 25 lm), 10 hrs (Pulse™ – 50-90 lm), 12 hrs (Courtesy™ – 30-90 lm) and up to 15 hrs (Superflash Turbo™ – 100 lm)
- Provides 270° of visibility
- Water resistant rated to IP66 standard
- 650 mAh lithium polymer battery charges in 2.5 hours with USB type C cable (included)
- Includes rear rack, seat post, seat stay and clip mount flexible mounting options
- 48 grams

## SUPERFLASH USB (3034-4)



### The power and durability of the original Superflash™ and it's rechargeable!

- High output surface mounted LED plus 2 5mm LEDs provide steady, Courtesy™ & Superflash™ modes
- FL1 Tested – Run times: 8 hrs (steady – 4 lm), 10 hrs (Courtesy™ – 1-3 lm) and up to 36 hrs (Superflash™ – 4 lm)
- Provides 180° of visibility
- Water resistance rated to IPX6 standard
- 270 mAh lithium polymer battery charges in 2-4 hours with micro USB cable (included)
- Includes seatpost, seat stay and clip mount for multiple mounting options
- Mount it to your rear rack with the Rack Bracket [#3108] which is sold separately
- 55 grams

## SUPERFLASH



### The legendary Pow! blink, blink, blink

- High output surface mounted LED plus 2.5mm LEDs provide steady & Superflash™ modes
- FL1 Tested – Run times: 60 hrs (steady – 7 lm) and up to 100 hrs (Superflash™ – 7 lm)
- Provides 180° of visibility
- Water resistance rated to IPX6 standard
- 2 AAA batteries (included)
- Includes seatpost and seat stay mounts and clip mount for multiple mounting options
- Mount it to your rear rack with the Rack Bracket [#3108] which is sold separately
- 70 grams

#### Superflash

3034

#### Superflash Stealth

3034-1



## SUPERFLASH TURBO (3070)



### The legendary high-powered tail light

- High output surface mounted LED plus 2 5mm LEDs provide steady & Turbo flash™ modes
- FL1 Tested – Run times: 5 hrs (steady – 20 lm) and up to 100 hrs (Turbo flash™ – 20 lm)
- Provides 180° of visibility
- Water resistance rated to IPX6 standard
- 2 AAA batteries (included)
- Includes seatpost and seat stay mounts and clip mount for multiple mounting options
- Mount it to your rear rack with the Rack Bracket (#3108) which is sold separately
- 71 grams

## SUPERFLASH 65 (3095)



### 65 lumen bicycle tail light

- Cree XBD and high output surface mounted LEDs provide 65 lumen output with high, low, Courtesy™ and Superflash™ modes
- FL1 Tested – Run times: 40 hrs (high – 30 lm), 90 hrs (low – 7 lm), 45 hrs (Courtesy™ – 20-60 lm) and up to 130 hrs (Superflash™ – 65 lm)
- Provides 220° of visibility
- Highly visible, even in daylight
- Dust & water resistance rated to IP64 standard
- 2 AAA batteries (included)
- Includes seatpost and seat stay mounts and clip mount for multiple mounting options
- Mount it to your rear rack with the Rack Bracket (#3108) which is sold separately
- 70 grams

## SUPERFLASH 65R (3096)



### 65 lumen rechargeable bicycle tail light

- Cree XBD and high output surface mounted LEDs provide 65 lumen output with high, low, Courtesy™ and Superflash™ modes
- FL1 Tested – Run times: 7 hrs (high – 30 lm), 12 hrs (low – 7 lm), 5.5 hrs (Courtesy™ – 13-40 lm) and up to 11.5 hrs (Superflash™ – 65 lm)
- Provides 220° of visibility
- Highly visible, even in daylight
- Dust & water resistance rated to IP65 standard
- 550 mAh lithium polymer battery charges in 2.5 hours with micro USB cable (included)
- Smart Charging Technology™ with built in low battery indicator
- Includes Quick Strap™ seatpost mount
- 52 grams

## GRATEFUL RED USB (3098)



### Rechargeable PB Power Array™ tail light

- PB 28 LED Power Array™ and reflector provides steady, Courtesy™ & Superflash™ modes
- FL1 Tested - Run times: 5 hrs (steady - 20 lm), 9 hrs (Courtesy™ - 6-18 lm) & up to 30 hrs (Superflash™ - 20 lm)
- CPSC certified reflector integrated in the lens (16 CFR 1512.16)
- Provides 160° of visibility
- Highly visible, even in daylight
- Dust & water resistance rated to IP65 standard
- 700 mAh lithium polymer battery charges in 2.5 hours with micro USB cable (included)
- Includes rear rack and seat post mounts for multiple mounting options
- 65 grams

## GRATEFUL RED (3020)



### 28 LED PB Power Array™ tail light

- PB 28 LED Power Array™ and reflector provides steady, Courtesy™ & Superflash™ modes
- FL1 Tested - Run times: 26 hrs (steady - 13 lm), 45 hrs (Courtesy™ - 4-11 lm) and up to 150 hrs (Superflash™ - 13 lm)
- CPSC certified reflector integrated in the lens (16 CFR 1512.16)
- Provides 160° of visibility
- Water resistance rated to IPX3 standard
- 2 AAA batteries (included)
- Includes rear rack and seatpost mounts for multiple mounting options
- 82 grams

## BLINKY 3H (3010)



### 3 LED tail light with helmet mount

- 3 x 5mm LEDs and built-in parabolic lensing provide steady & flashing modes
- FL1 Tested - Run times: 8.5 hrs (steady - 2 lm) and up to 100 hrs (flashing - 2 lm)
- Provides 120° of visibility plus Scotchlite™ side reflective strips for extra visibility
- 1 AAA batteries (included)
- Includes self-leveling helmet mount, seatpost and seat stay mounts for multiple mounting options
- Mount it to your rear rack with the Rack Bracket (#3108) which is sold separately
- 67 grams

## BLINKY 7 (3019)



### 7 LED tail light

- 7 x 5mm LEDs provide steady & flashing modes
- FL1 Tested - Run times: up to 50 hrs (steady - 6 lm) and up to 100 hrs (flashing - 6 lm)
- Provides 220° of visibility
- Water resistance rated to IPX6 standard
- 2 AAA batteries (included)
- Includes seatpost and seat stay mounts and clip for multiple mounting options
- Mount it to your rear rack with the Rack Bracket (#3108) which is sold separately
- 64 grams

## BLINKY 3 (3009)



*Now, Twice  
as Bright!*

### 3 LED tail light

- 3 surface mounted LEDs provide steady & flashing mode
- FL1 Tested - Run times: 70 hrs (steady - 12 lm), up to 140 hrs (flashing - 12 lm)
- Provides 140° of visibility
- 2 AAA batteries (included)
- Includes seat post and seat stay mounts and clip mount for multiple mounting options
- Mount it to your rear rack with the Rack Bracket (#3108) which is sold separately
- 68 grams

## SPOK USB TAIL LIGHT (3159)



### Fast mount rechargeable tail light

- High output surface mounted LED provides steady, Courtesy™ & Superflash™ modes
- FL1 tested –run times: 4.5 hrs (steady-5 lm), 7 hrs (Courtesy™-1.5-4.5 lm) & up to 22 (Superflash™-5 lm)
- Side cut outs provide 270° of visibility
- Dust & water resistance rated to IP54 standard
- 270 mAh lithium polymer battery charges in 2hours with micro USB cable (included)
- Diminutive size and fast mounting rubber strap mounts to multiple mounting locations in seconds without tools
- 25 grams

## SPOK TAIL LIGHT (3059)



### Fast mounting safety light

- High output surface mounted LED provides steady and flashing modes
- FL1 Tested – Run times: 24 hrs (steady - 3 lm) and up to 48 hrs (flashing - 3 lm)
- Side cut outs provide 200° of visibility
- 1 CR2032 battery (included)
- Fast mounting rubber strap mounts to multiple mounting locations in seconds without tools
- 18 grams

## TAIL LIGHT BRACKET (3107)



### Seatpost & stay tail light bracket

- Includes seatpost and seatstay mounting brackets
- Compatible with Rojo 100, Blinky 3, 3H, 7, Grateful Reds, Superflashes, Turbo and Blinky Safety tail light

## RUBBER MOUNT TAIL LIGHT BRACKET (3115)



### Quick mount seatpost tail light bracket

- Compatible with seatpost diameter 20mm-36mm
- Easy on/easy off design makes for quick mounting and removal
- Adjustable light angle
- Compatible with Rojo 100, Blinky 3, 3H, 7, Grateful Reds, Superflashes, Turbo and Blinky Safety tail light

## RACK TAIL LIGHT BRACKET (3108)



### Tail light bracket for rear racks

- Attaches to rear rack
- Compatible with Rojo 100, Blinky 3, 3H, 7, Grateful Reds, Superflashes, Turbo and Blinky Safety tail light

## AERO MOUNT TAIL LIGHT BRACKET (3114)



### Quick mount tail light bracket for aero seatposts

- Specifically designed for aero seatposts
- Easy on/easy off design makes for quick mounting and removal
- Adjustable light angle
- Compatible with Rojo 100, Blinky 3, 3H, 7, Grateful Reds, Superflashes, Turbo and Blinky Safety tail light



## Refurbish, not rubbish!

We're committed to keeping our products on the road and out of the landfill and that's why we have designed them to be easily rebuildable and we offer a comprehensive catalog of replacement parts to help extend the life of our products. Visit [www.planetbike.com](http://www.planetbike.com) to see a full listing of small parts.

# BIKE SIDE LIGHTS



Be seen from all directions when you're on the go with cycling side lights! Pair any of our amber side lights with one of our head lights and tail lights to achieve 360° of visibility.

## Side lights feature:

- High output LEDs provide steady and flash modes
- Pair with a head light and a tail light to increase visibility to 360°
- Battery powered for long run times
- Multiple mounting options

## BUTTON BLINKY SIDE SET (3088-1)



### Side amber lights that are cute as a button

- Add these to your head and tail light to complete 360° of visibility
- 2 high output surface mounted LEDs provide steady and flashing modes
- FL1 Tested - Run times: 50 hrs (steady - 15 lm) and up to 85 hrs (flashing - 15 lm)
- Provides 160° of visibility
- Water resistance rated to IPX3 standard
- 1 CR2032 battery each (included)
- Mounts with rubber stretch strap
- 18 grams (each)

## BRT STRAP (3030)



### Multi-use LED safety light

- 5mm LED and fiber optic band provide steady & flashing modes
- Run times: up to 100 hrs (steady and flashing)
- Multiple uses: arm band, leg band, dog collar and many more
- 1 CR2032 battery (included)
- Rubberized back, tension adjuster and side release buckle make for quick and secure mounting
- Extension strap available (Part #3030-1)

# BIKE LIGHT SETS

We've teamed up some of our most popular front and rear lights to create ten light set combinations.



## Light set features:

- Multiple modes for brilliance, versatility and safety
- Long run times from rechargeable lithium or readily available batteries
- High quality CREE and Nichia LEDs
- Sturdy and easy to use bracketing system
- Handlebar bracket fits up to 31.8 mm handlebars



## BLAZE 210 SL + SUPERFLASH USB (3182)



**The rechargeable light set that is eye catching from 360°**

### Blaze 210 SL:

- FL1 Tested: Run times: 1.4 hrs (high - 210 lm), 3 hrs (low - 120 lm), 6 hrs (Courtesy™ - 65-185 lm) and 21 hrs (Superflash™ - 210 lm)
- Amber side lights provide 275° of visibility
- 88 grams

### Superflash USB:

- Run times: 8 hrs (steady - 4 lm), 10 hrs (Courtesy™ - 1-3 lm) and 36 hrs (Superflash™ - 4 lm)
- Provide 180° of visibility
- 55 grams

## BLAZE 150 SL + SUPERFLASH TURBO (3183)



**The light set that is eye catching from 360°**

### Blaze 150 SL:

- FL1 Tested - Run times: 5 hrs (high - 150 lm), 12 hrs (low - 80 lm) and 64 hrs (Superflash™ - 150 lm)
- Amber side lights provide 275° of visibility
- 120 grams

### Superflash Turbo:

- Run times: 5 hrs (steady - 20 lm) and 100 hrs (Turbo flash™ - 20 lm)
- Provide 180° of visibility
- 71 grams

## BLAZE 45 + SUPERFLASH (3040)



**The trusty and affordable commuter light set**

### Blaze 45:

- FL1 Tested - Run times: 20 hrs (steady- 45 lm) and up to 100 hrs (flashing - 45 lm)
- Side cut outs provide 180° of visibility
- 123 grams

### Superflash:

- Run times: 60 hrs (steady 7 lm) and up to 100 hrs (Superflash™ - 7 lm)
- Provide 180° of visibility
- 70 grams

## BEAMER 80 + GRATEFUL RED (3161)



### 80 lumen headlight and PB Power Array™ tail light

#### Beamer 80 features:

- FL1 tested- Run times: 6.5 hrs (80 lm), 24 hrs (Courtesy™ -24-72 lm) & 70 hrs (Superflash™ - 80 lm)
- A3 cam™ mount adjusts or removes without tools
- 63 grams

#### Grateful Red features:

- FL1 Tested-Run times: 26 hrs (steady-13 lm), 45 hrs (Courtesy™-4-11 lm) and up to 150 hrs (Superflash™ - 13 lm)
- CPSC certified reflector integrated in the lens (16 CFR 1512.16)
- 82 grams

## BEAMER 80 + BLINKY 3 (3100)



### 80 lumen headlight and the classic 3 LED tail light

#### Beamer 80:

- FL1 Tested - Run times: 6.5 hrs (steady 80 lm) 24 hrs (Courtesy™ 24-72 lm) and 70 hrs (Superflash™ 80 lm)
- A3 cam™ mount adjusts or removes without tools
- 63 grams

#### Blinky 3:

- FL1 Tested - Run times: 70 hrs (steady - 12 lm) and up to 140 hrs (flashing - 12 lm)
- Provides 140° of visibility
- 68 grams

## BEAMER 1 + BLINKY 3 (3032)



### A single LED headlight and the classic 3 LED tail light

#### Beamer 1 features:

- FL1 Tested - Run times: 35 hrs (steady - 6 lm) and up to 100 hrs (flashing - 6 lm)
- QuickCam™ bracket mounts, adjusts or removes without tools
- 184 grams

#### Blinky 3:

- FL1 Tested - Run times: 70 hrs (steady - 12 lm) and up to 140 hrs (flashing - 12 lm)
- Provides 140° of visibility
- 68 grams

## SPOK 50 USB LIGHT SET (3457)



### Fast mount rechargeable light set

- High output surface mounted LED provides steady, Courtesy™ & Superflash™ modes
- FL1 tested – Headlight run times: 2.5 hrs (steady – 50 lm), 3.5 hrs (Courtesy™ – 14 -45 lm) & up to 14hrs (Superflash™ - 50 lm)
- FL1 tested – Tail light run times: 4.5 hrs (steady – 5 lm), 7 hrs (Courtesy™ – 1.5-4.5 lm) & up to 22 hrs (Superflash™ – 5 lm)
- Side cut outs provide 270° of visibility
- Dust & water resistance rated to IP54 standard
- 270 mAh lithium polymer battery charges in 2 hours with micro USB cable (included)
- Diminutive size and fast mounting rubber strap mounts to multiple mounting locations in seconds without tools
- 25 grams

## SPOK LIGHT SET (3057)



### Fast mounting safety lights

- High output surface mounted LED provides steady, & flashing modes
- FL1 tested – Headlight run times: 8 hrs (steady – 20 lm) & up to 16 hours (flashing – 20 lm)
- FL1 tested – Tail light run times: 24 hrs (steady – 3 lm) & up to 48 (flashing – 3 lm)
- CR2032 battery included
- 18 grams

## BLINKY SAFETY LIGHT SET (3035)



### Cute combo set that lights you up

#### Blinky front:

- Run times: 20 hrs (steady – 6 lm) and up to 100 hrs (flashing – 6 lm)
- Provides 220° of visibility
- 36 grams

#### Blinky rear:

- Run times: 20 hrs (steady – 3 lm) and up to 100 hrs (flashing – 3 lm)
- Provides 220° of visibility
- 36 grams

## BUTTON BLINKY SAFETY SET (3088)



### Safety bike lights that are cute as a button

- 2 high output surface mounted LEDs provide steady and flashing modes
- **Button Blinky front** FL1 Tested - Run times: 12 hrs (steady - 15 lm) and up to 40 hrs (flashing - 15 lm)
- **Button Blinky rear** FL1 Tested - Run times: 20 hrs (steady - 4 lm) and up to 50 hrs (flashing - 4 lm)
- Water resistance rated to IPX3 standard
- 1 CR2032 battery each (included)
- Mounts with rubber stretch strap
- 18 grams (each)

## BUTTON BLINKY POINT OF PURCHASE BOXES (QTY 8)



### Button Blinky headlight POP box (3089)

- POP box of 8 Button Blinky bike headlights
- FL1 Tested - Run times: 12 hrs (steady - 15 lm) and up to 40 hrs (flashing - 15 lm)
- Provides 160° of visibility
- 18 grams

### Button Blinky tail light POP box (3090)

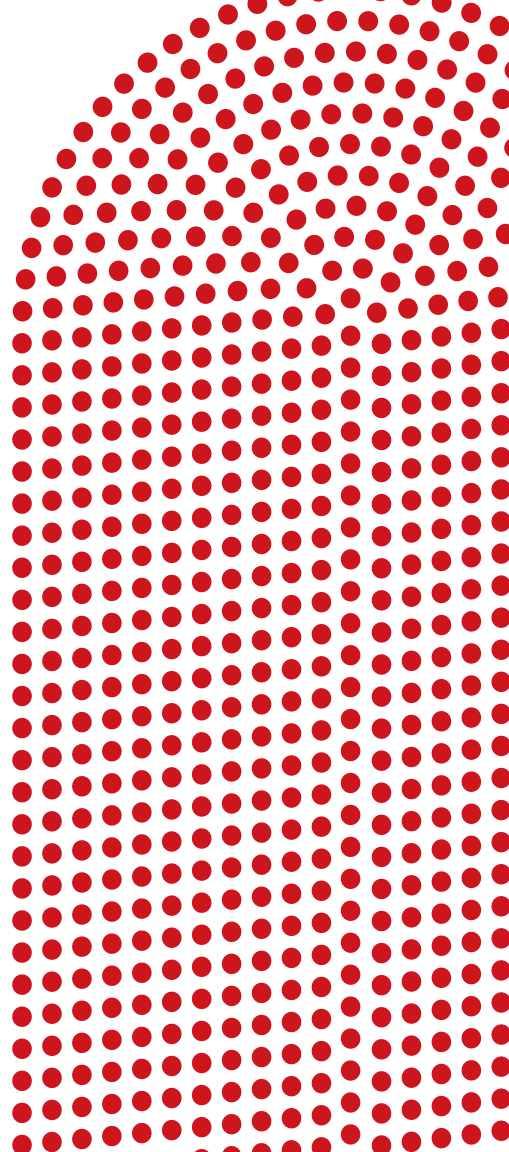
- POP box of 8 Button Blinky bike tail lights
- FL1 Tested - Run times: 20 hrs (steady - 4 lm) and up to 50 hrs (flashing - 4 lm)
- Provides 160° of visibility
- 18 grams

# BIKE FENDERS

Our fenders keep you covered when Mother Nature rains on your parade. These versatile, beauties are rugged and work to keep you dry. All full fenders come with pre-installed hardware for hassle-free mounting.

## Fender features:

- Highly durable construction
- Easily obtained replacement parts
- Available in a wide range of sizes to fit most bikes



## GRASSHOPPER (7020)



### Natural full coverage bamboo fenders

- 3 ply Bamboo laminate blades w/marine grade top coat finish
- Stainless steel V-stays and hardware are pre-installed and disc brake compatible
- Release Tabs on front fender for added safety
- Wheel size: 700c
- Fender width: 45mm

## CASCADIA ALUMINUM



### Rugged full coverage aluminum fenders

- 6061 aluminum blades
- 100 mm mudflaps for extended coverage
- Stainless steel V-stays and hardware are pre-installed and disc brake compatible
- Release Tabs on front fender for added safety
- Wheel size: 20", 26", 27.5", 29" and 700c

Fender Size	Black	Silver
20" x 50mm	7050-8	7056-6
26" x 50mm	7052-8	
26" x 60mm	7057-8	
27.5" x 50mm	7053-8	
27.5" x 60mm	7054-8	
700c x 35mm	7058-8	
700c x 43mm	7056-8	
700c x 50mm	7055-8	
29" x 65mm	7059-8	

## CASCADIA



### Full coverage fenders tough enough for the Pacific Northwest

- Durable all-weather polycarbonate blades
- 130mm mudflaps for extra coverage
- Stainless steel V-stays and hardware are pre-installed and disc brake compatible
- Release Tabs on front fender for added safety
- Wheel size: 26", 29" and 700c

Fender Size	Black	Silver
26" x 60mm	7057-5	7057
700c x 35mm	7058-5	7056
700c x 45mm	7056-5	
29" x 65mm	7059	

## HARDCORE



### Our classic full coverage fenders with mudflaps

- Durable all-weather polycarbonate blades
- 40mm mudflaps for extra coverage
- Stainless steel stays and coated steel hardware are pre-installed
- Release Tabs on front fender for added safety
- Wheel size: 26" and 700c

Fender Size	Black	Yellow
26" x 60mm	7047	
700c x 35mm	7048	
700c x 45mm	7046	7046-3

## SPEEDEZ



### Quick fastening fender set

- Durable all-weather polycarbonate blades
- Mudflaps for extra coverage (no flaps on 700c x 35mm version)
- Stainless steel V-stays and hardware are pre-installed and disc brake compatible
- Quick Attach fork and seat stay brackets make mounting a snap
- Wheel size: 26" and 700c

Fender Size	Black	Silver
26" x 60mm	7016	
700c x 35mm	7017	7017-2
700c x 45mm	7015	

## CASCADIA ALUMINUM RECUMBENT



### Full coverage aluminum recumbent fenders

- 6061 aluminum blades
- 150mm mudflaps for extra coverage
- Adjustable stainless steel stays create a secure fit on any style recumbent
- Release Tabs on front fender for added safety
- Wheel size: 16", 20", 26" and 700c

Fender Size	Front	Rear
16" x 50mm	7060	
20" x 50mm	7061	
20" x 60mm	7062	
26" x 50mm	7063	
20" x 50mm		7064
20" x 60mm		7065
26" x 50mm		7066
26" x 60mm		7067
700c x 43mm		7068

## FULL



### Full coverage fenders

- Durable all-weather polycarbonate blades
- Steel U-stays and hardware are pre-installed
- Release Tabs on front fender for added safety
- Wheel size: 26" and 700c

Fender Size	Black
26" x 60mm	7045
700c x 45mm	7044

## CLIP-ONS



### Quick fastening fender sets

- Durable all-weather polycarbonate blade
- Includes hardware to create a secure fit on most bikes
- Wheel size: 26" and 700c

Fender Size	Black
26" x 70mm	7002
700c x 45mm	7001



## BIG BUCK FRONT (7033)



### A beefy front fender for big tires

- Durable all-weather polypropylene blade
- Includes hardware to fit small, standard and oversized tapered steer tubes (18.5-34.5mm ID)
- Mounts to most suspension and rigid forks
- Fits wheel sizes including 26", 27.5", 29" and 700c
- Fender width is 90-115mm for 3-5" wide tires
- Weight: 206 grams

## BIG BUCK REAR (7034)



### A beefy rear fender for big tires

- Durable all-weather polypropylene blade
- Quick release seatpost mount attaches and removes in a snap
- Features fender angle adjustability to fit most bikes and dial in spray protection
- Fits wheel sizes including 26", 27.5", 29" and 700c
- Fender width is 90-120mm for 3-5" wide tires
- Weight: 95 grams

## BIG BUCK BOARD (7035)



### A beefy downtube fender for big tires

- Durable all-weather polypropylene blades
- Two-point rubber strap attachment for quick mounting and removal
- Fits wheel sizes including 26", 27.5", 29" and 700c
- Fender width is 110-120mm for 3-5" wide tires
- Weight: 95 grams

## GRUNGE FRONT (7036)



### Fast mount front fork mud guard

- Durable all-weather polypropylene blade
- Mounts to most suspension and rigid forks
- Includes hardware to fit small, standard and oversized tapered steerer tubes (18.5-34.5mm ID)
- Eyelets Required?: No
- Wheel size: 26", 27.5", 29" and 700c
- Dimensions: 85mm wide x 600mm long
- Max tire width: 2.1"
- Weight: 160 grams

## GRUNGE REAR (7037)



### Fast mount seatpost mud guard

- Durable all-weather polypropylene blade
- Quick release seatpost mount attaches and removes in a snap
- Features fender angle adjustability to fit most bikes and dial in spray protection
- Eyelets Required?: No
- Wheel size: 24", 26", 27.5", 29" and 700c
- Dimensions: 85mm wide x 460mm long
- Max tire width: 2.25"
- Weight: 174 grams

## GRUNGE BOARD DOWNTUBE (7003)



### Minimalist downtube mud guard

- Durable all-weather polypropylene blade
- Two-point rubber strap attachment for quick mounting and removal
- Fender width: 60-95mm
- Max tire width: 2.75"
- Weight: 88 grams

## FULL FENDER ATTACHMENT BRACKET WITH RELEASE TAB (7044-1)



- Releases front fender stays if debris is present between fender and tire
- Fits current Full Fenders (7044 & 7045) and past Full Fenders (7004 & 7005). Not recommended for non-Planet Bike fenders.

## RELEASE TAB (7056-1)



- Releases front fender stays if debris is present between fender and tire
- Fits current and past Grasshopper, Cascadia ALX, Cascadia and Hardcore front fenders (not recommended for non-Planet Bike fenders)



## Refurbish, not rubbish!

We're committed to keeping our products on the road and out of the landfill and that's why we have designed them to be easily rebuildable and we offer a comprehensive catalog of replacement parts to help extend the life of our products. Visit [www.planetbike.com](http://www.planetbike.com) to see a full listing of small parts.

# BIKE COMPUTERS



Planet Bike computers are great for training, touring, or keeping track of your car-free miles. A quick glance at our button-less computer gives you all the information that you need for darting across town or going the long haul!

## Computer features:

- 4-line MacroMonitor LCD displays up to 5 pieces of data at a glance
- Fits up to 31.8mm handlebars
- Magnet fits up to 4mm bladed spokes

## PROTEGE 9.0 WIRELESS (8003)



### 9 function wireless bike computer

- 9 functions: current speed, speed comparator, ride time, trip distance, dual odometer (for 2 wheel sizes), average speed, maximum speed, clock and temperature
- 4-line MacroMonitor™ LCD displays up to 5 pieces of data at a glance
- Easy to read large display font
- Digital wireless technology for use with front wheel only (max. transmission 21 inches)
- Includes Universal handlebar/stem compatible bracket
- Manual start / stop prolongs battery life
- 2 CR2032 batteries (included)
- Can be programmed for 2 bikes (wheel sizes) with additional sensor kit (#8000-8)
- Case size: 40mm x 55mm
- Weight: 88 grams (including bracket and sensor)

## PROTEGE 9.0 (8002)



### 9 function bike computer

- 9 functions: current speed, speed comparator, ride time, trip distance, dual odometer (for 2 wheel sizes), average speed, maximum speed, clock and temperature
- 4-line MacroMonitor™ LCD displays up to 5 pieces of data at a glance
- Easy to read large display font
- Mounting hardware includes: 25.4-31.8mm handlebar bracket and 82cm wired front wheel mounting kit
- Automatically begins displaying data when wheel is set in motion
- 1 CR2032 battery (included)
- Can be programmed for 2 bikes (wheel sizes) with additional sensor kit (#8000-1)
- Case size: 40mm x 47mm
- Weight: 57 grams (including bracket and sensor)

## PROTEGE 8.0 (8001)



### 8 function bike computer

- 8 functions: current speed, speed comparator, ride time, trip distance, dual odometer (for 2 wheel sizes), average speed, maximum speed and clock
- 4-line MacroMonitor™ LCD displays up to 5 pieces of data at a glance
- Easy to read large display font
- Mounting hardware includes: 25.4-31.8mm handlebar bracket and 82cm wired front wheel mounting kit
- Automatically begins displaying data when wheel is set in motion
- 1 CR2032 battery (included)
- Can be programmed for 2 bikes (wheel sizes) with additional sensor kit (#8000-1)
- Case size: 40mm x 47mm
- Weight: 57 grams (including bracket and sensor)

## PROTEGÉ 5.0 (8000)



### 5 function bike computer

- 5 functions: current speed, ride time, trip distance, odometer and clock
- 4-line MacroMonitor™ LCD displays up to 4 pieces of data at a glance
- Easy to read large display font
- Mounting hardware includes: 25.4-31.8mm handlebar bracket and 82cm wired front wheel mounting kit
- Automatically begins displaying data when wheel is set in motion
- 1 CR2032 battery (included)
- Case size: 40mm x 47mm
- Weight: 57 grams (including bracket and sensor)

## PROTEGÉ BIKE COMPUTER BRACKET (8000-1)



- Contains bracket with 86cm wire, wheel magnet (fits up to 4mm bladed spokes) and zip ties
- Bracket fits most bars (25.4 to 31.8mm)
- Compatible with: Protegé 5.0, 8.0 and 9.0
- Intended as a replacement of your original bracket or to mount to a second bike, utilizing the 2nd wheel function on your computer

## PROTEGÉ TANDEM / RECUMBENT COMPUTER BRACKET (8000-3)



- Contains bracket with 160cm wire, wheel magnet and zip ties
- Brackets fits Standard (25.4-26.0mm) bars
- Compatible with: Protegé 5.0, 8.0 and 9.0
- Ideal for long wheelbase recumbent and computer installs on a tandem's rear bars

## PROTEGÉ REAR WHEEL BIKE COMPUTER BRACKET (8000-2)



- Contains bracket with 130cm wire, wheel magnet (fits up to 4mm bladed spokes) and zip ties
- Bracket fits most bars (25.4 to 31.8mm)
- Compatible with: Protegé 5.0, 8.0 and 9.0
- Ideal for rear wheel indoor bicycle trainers

## WIRELESS BIKE COMPUTER MOUNTING BRACKET (8000-8)



- Contains Universal handlebar/stem bracket, sensor, zip ties and magnet
- Compatible with: Protegé 9.0 wireless computer

# BIKE PUMPS + CO<sub>2</sub>

The right tire pressure makes for a great ride. Our line of floor pumps, mini pumps, and CO<sub>2</sub> inflators will get you pumped up fast and back in the saddle.



## ALX 2.0 BIKE FLOOR PUMP (1002-9)



**NEW**  
Longer Hose

### Deluxe aluminum floor pump – Chili Pepper Red

- Lightweight anodized 6000 series aluminum barrel
- Classic wood handle for comfortable air compression
- Auto Head fits both Presta and Schrader valves
- Oversized 3 inch 160 psi dial gauge
- Pressure rated to 200 psi
- Needles included for pumping up sports balls
- Large steel base for stability
- Rebuildable
- Height: 27"
- Hose length" 41 ½ inches

## STX BIKE FLOOR PUMP (1006-9)



**NEW**  
Longer Hose

### Deluxe steel floor pump – Metallic Grey

- Rugged steel barrel, plunger, and base
- Anatomically designed handle for comfortable air compression
- Auto Head fits both Presta and Schrader valves
- Oversized 3 inch 160 psi dial gauge
- Pressure rated to 200 psi
- Needles included for pumping up sports balls
- Large steel base for stability
- Rebuildable
- Height: 27"
- Hose length" 41 ½ inches

## COMP 2.0 BIKE FLOOR PUMP (1007-9)



**NEW**  
Longer Hose

### Composite and steel floor pump – Arcade White

- Super-tough steel barrel and plunger with a composite base
- Anatomically designed handle for comfortable air compression
- Dual Head fits both Presta and Schrader valves
- Oversized 3 inch 160 psi dial gauge
- Pressure rated to 200 psi
- Needles included for pumping up sports balls
- Large base for stability
- Rebuildable
- Height: 25"
- Hose length" 37 ½ inches



## VERSAIL MINI (1042)



### Upright dual function mini pump

- Dual function allows for use as a mini floor pump or hand pump
- T-handle and swivel foot base adds comfort, stability and power
- Large gauge with easy-read face
- Reversible Schrader/Presta valve head
- Designed for fast inflation of high-volume & high pressure road tires to 100 psi, pressure rated to 200 psi
- Length: 296mm
- Weight: 190 grams

## MICROPRO (1032)



### Ultra-light pocket-size mini pump

- Smooth, lightweight alloy barrel
- Locking T-handle for maximum pumping efficiency
- Reversible Schrader/Presta valve head
- Includes mounting bracket
- Rebuildable
- Designed for fast inflation to 80 psi, pressure rated to 120 psi
- Length: 202mm
- Weight: 86 grams

## MICROMITE 2.0 (1040)



### Micro dual stage mini pump

- High Volume Telescoping alloy barrels with high-pressure and high volume modes
- Ergonomic T-handle for maximum pumping efficiency
- Autohead fits both Presta and Schrader valves
- Designed for fast inflation to 80 psi, pressure rated to 120 psi
- Length: 230mm
- Weight: 165 grams

## OZONE MINIS



### Mini bike pumps

- 24mm barrel is lightweight and rugged
- Locking T-handle for maximum pumping efficiency
- Reversible Schrader/Presta valve head
- Stashes easily in a jersey pocket or backpack
- Includes mounting bracket
- Designed for fast inflation to 60 psi, pressure rated to 100 psi
- Ozone AL+G has large, easy to read gauge
- Length: 305mm

Name	Part#	Weight
Ozone AL	1009	170 grams
Ozone Comp	1010	137 grams
Ozone AL+G	1011	164 grams

## SHOCKMATE 3.0 (1141)



### Hi/Low pressure suspension pump

- Compact and rugged design is ideal for backcountry adventures
- Aluminum construction creates smooth pumping action
- 8 inch swivel hose and pump head for easy attachment
- Locking T-handle
- Easy-read industrial grade gauge rated to 400 psi
- Bleeder valve for fine-tuning pressure
- Length: 260mm
- Weight: 149 grams

## DIAL GAUGE (1029)



### Bike tire gauge

- Dual range dial displays up to 140 psi
- Durable case and crystal lens
- Presta/Schrader adaptable head
- Retains reading until reset
- Compatible with Presta valves with removable valve cores
- Length: 120mm
- Weight: 101 grams

## PENCIL GAUGES (1028)



### Bicycle tire gauge

- Gauge rated from 10-120 psi
- Schrader valve head for bicycles and many other vehicles
- 10 piece point of purchase wall display (5 red, 5 black)
- Length: 150mm
- Weight: 24 grams

## FAT MAX 15 (1027)



### Fat bike tire gauge

- Designed with a low pressure range of 2-15 psi specific for fat bike tires
- Durable case and crystal lens
- Presta/Schrader adaptable head
- Retains reading until reset
- Compatible with Presta valves with removable valve cores
- Length: 120mm
- Weight: 101 grams

## AIR SMITH CO<sub>2</sub> (1038)



### Mini pump with integrated CO2 inflator

- CO2 function for fast inflation and pump function for repairs and emergencies
- Fits Presta and Schrader valves without adaptors
- Smooth Regulator™ valve for precise inflation and safety
- Includes 16g threaded cartridge and insulator sleeve
- Length: 150mm
- Weight: 79 grams (w/o cartridge)

## AIRSHIP 2.0 (1025)



### CO<sub>2</sub> tire inflator

- Lightweight aluminum design stores cartridge and protects from cold cartridge when in use
- Auto head fits both Presta and Schrader valves
- Accepts 16g threaded and non-threaded cartridges
- Includes one 16g threaded CO2 cartridge
- Length: 130mm
- Weight: 123 grams

## RED ZEPPELIN (1024) (COMPOSITE HEAD ONLY)



### CO<sub>2</sub> inflator

- Impact resistant body and precision-machined head with Airflation Control 2.0™ knob for improved reliability and ease of use
- Fits Presta and Schrader valves without adaptors
- Compatible with threaded cartridges
- Small size fits in saddle bag or jersey pocket
- Size: 50 x 40 x 25mm
- Weight: 23 grams

## RED ZEPPELIN (1119) (METAL HEAD ONLY)



### CO<sub>2</sub> inflator

- Precision-machined body and head with Airflation Control 2.0™ knob for improved reliability and ease of use
- Fits Presta and Schrader valves without adaptors
- Compatible with threaded cartridges
- Small size fits in saddle bag or jersey pocket
- Size: 50 x 40 x 25 mm
- Weight: 48 grams

## BLACK ZEPPELIN (1121) (METAL HEAD ONLY)



### CO<sub>2</sub> inflator

- Precision-machined body and head for improved reliability and ease of use
- CO2 pierce indicator notifies you when the CO2 cartridge is ready to be discharged
- Fits Presta and Schrader valves without adaptors
- Compatible with threaded cartridges
- Small size fits in saddle bag or jersey pocket
- Size: 45 x 32 x 21 mm
- Weight: 24 grams

## RED ZEPPELIN (1019) W/ 2 16G CO2 CARTRIDGES



### CO<sub>2</sub> inflator

- Precision-machined body and head with Airflation Control 2.0™ knob for improved reliability and ease of use
- Fits Presta and Schrader valves without adaptors
- Compatible with threaded cartridges
- Includes two 16g CO2 cartridges & insulator sleeve
- Size: 50 x 40 x 25mm
- Weight: 171 grams

## BLACK ZEPPELIN (1120) W/ 2 16G CO2 CARTRIDGES



### CO<sub>2</sub> inflator

- Precision-machined body and head for improved reliability and ease of use
- CO2 pierce indicator notifies you when the CO2 cartridge is ready to be discharged
- Fits Presta and Schrader valves without adaptors
- Compatible with threaded cartridges
- Includes two 16g CO2 cartridges & insulator sleeve
- Size: 45 x 32 x 21 mm
- Weight: 147 grams

## REPLACEMENT CO<sub>2</sub> CARTRIDGES



### Planet Bike's line of CO<sub>2</sub> replacement cartridges make tire repairs quick and easy.

- Our CO<sub>2</sub> cartridges work in Planet Bike inflators as well as most competitors' inflators
- Planet Bike cartridges are tested to the highest standards for durability, safety and reliability. They contain pure CO<sub>2</sub> with no oils or contaminants
- 100% recyclable steel cartridges
- All threaded cartridges are compatible with Air Kiss, Airship 2.0, Red Zeppelin, Black Zeppelin & Air Smith CO<sub>2</sub>
- All 16g threadless cartridges are compatible with the Airship 2.0

	Size	Quantity	Threaded	Part#
25g	individual	yes		1019-9
	2 pack	yes		1024-2
	16 pc tub	yes		1024-8
16g	3 pack	yes		1019-1
	3 pack	no		1019-4
	20 pc tub	yes		1019-2
	20 pc tub	no		1019-3
	100 pc tub	yes		1024-9
12g	3 pack	yes		1019-5
	3 pack	no		1019-6
	25 pc tub	yes		1019-8
	50 pc tub	no		1019-7

CO <sub>2</sub> INFLATION GUIDE	12 gram		16 gram		25 gram	
	PSI	BAR	PSI	BAR	PSI	BAR
Road 700c	90	6.2	120	8.3	NOT RECOMMENDED	
Touring 700c	62	4.3	88	6.0		
Cross 700c	38	2.6	55	3.8	80	5.5
MTB 26"	30	1.7-2.0	40	2.0-2.8	50-60	3.5-4.1
MTB 29"	25	1.7	30	2.0	45	3.1
<b>CAUTION:</b> Do not over-inflate. Refer to tire specification and always use a gauge to determine proper inflation. Inflation Guide is for reference only. Tire size, temperature and other factors can affect final pressure reading.						

# BIKE LOCKS + CABLES



Choosing a safe place to park your bike and choosing the right lock are critical in fending off bike thieves. With our locks and cables you can rest easy that your bike will be there when you get back.

## Lock features:

- Durable, weather resistant design
- Compact design allows for easy transport



## THE CHAIN (2030)



### Transport and storage bike security chain

- Four-sided trapezoidal ultra-hardened steel links
- Unique design and hardening process of individual links defy bolt cutters, saws, chisels, hammers, files and leverage attacks
- Durable weatherproof nylon sleeve protects bicycle's finish
- Weight: 9.5 lbs
- Length: 200cm (6.5 feet)

## QUICK STOP RESETTABLE (2016)



### Resettable combination cable lock

- 10 mm woven self-coiling steel cable
- Plastic covering protects the bicycle's finish
- Four digit resettable combination
- QuikClip™ mounting bracket included
- For low to medium theft areas
- Weight: 1.3 lbs
- Dimensions: 10mm x 6ft

## DAY TRIPPER (2007)



### Cable key lock

- 10 mm woven self-coiling steel cable
- Plastic covering protects the bicycle's finish
- Lock core cover protects the lock from the elements
- QuikClip™ mounting bracket included
- For low to medium theft areas
- Weight: 0.9 lbs
- Dimensions: 10mm x 6ft

## SEAT LEASH (2024)



- 3 mm woven steel cable with doubled ended loops
- Clear plastic covering protects the bicycle's finish
- Secures bike seat and seatpost to your frame
- For low- to medium-risk theft areas
- Weight: 21 grams
- Cable size 3mm x 24 inches

## WHEEL TETHER (2022)



- 5 mm woven steel cable with doubled ended loops
- Clear plastic covering protects the bicycle's finish
- Secures wheels or bike seat by threading into u-lock or cable lock
- Weight: 63 grams
- Cable size 5mm x 31 inches

## MULTI-USE CABLE (2025)



- 10mm woven steel cable with double ended loops
- Plastic covering protects the bicycle's finish
- When paired with your bike lock it's great for the cyclist on the go
- For medium - to high-risk theft areas
- Weight: .57 lbs
- Length: 2.75 ft

## MULTI-USE CABLE (2027)



- 15mm woven steel cable with double ended loops
- Plastic covering protects the bicycle's finish
- Ideal for securing wheels to frame or bikes to your car rack
- For medium - to high-risk theft areas
- Weight: 3.68 lbs
- Length: 8 ft



## Refurbish, not rubbish!

We're committed to keeping our products on the road and out of the landfill and that's why we have designed them to be easily rebuildable and we offer a comprehensive catalog of replacement parts to help extend the life of our products. Visit [www.planetbike.com](http://www.planetbike.com) to see a full listing of small parts.

# BIKE SEATS + BIKE BAGS

Our saddles are designed to ensure comfort on the bike for all day excursions. Our seat packs and bike bags are designed to make sure you can carry the essential tools, snacks, and other miscellaneous items you need for your next adventure.



## A.R.S. LIFT (5200, 5201)



### Anatomical relief saddle

- E-Bike compatible
- Camber cushion ergonomic design reduces pressure on sit bones and provides added comfort for seated pedaling
- Gel and foam padding for maximum comfort
- Dampening inserts reduce vibration and decrease pressure on soft tissue area
- Integrated lift handle provides a hand hold to more easily pick up and move your bike
- Steel rails
- Weight: 581 grams (Lift 175), 631 grams (Lift 210)

	Part #	Size
Lift 175	5200	275 x 175mm
Lift 210	5201	265 x 210mm

## A.R.S. SPRING



### Anatomic relief spring saddle

- Elastomer spring suspension for shock absorption
- Sit-bone Gel pads plus foam padding relieve pressure from soft tissue
- Full length center recess with cut out for comfortable anatomic relief
- Weather resistant cover with abrasion-resistant side material
- Steel rails
- Weight: 694 grams (women's) / 815 grams (men's)

Gender	Part #	Size
Men's	5019	267 x 205mm
Women's	5018	245 x 210mm

## A.R.S. STANDARD



### Anatomic relief saddle

- Sit-bone Gel pads plus foam padding relieve pressure from soft tissue
- Full length center recess with cut out for comfortable anatomic relief
- Weather resistant cover with abrasion-resistant side material
- Steel rails
- Weight: 407 grams (women's) / 430 grams (men's)

Gender	Part #	Size
Men's	5020	275 x 175mm
Women's	5021	255 x 173mm

## A.R.S. CLASSIC ALL WEATHER



### The original anatomic relief saddle

- Foam padding with flexible base for maximum comfort and support
- Full length center recess with cut out for comfortable anatomic relief
- Weather resistant cover
- Steel rails
- Weight: 367 grams (women's) / 391 grams (men's)

Gender	Part #	Size
Men's	5000	270 x 165mm
Women's	5001	240 x 160mm

## COMFORT TRACTOR (5017)



### Super wide comfort saddle

- Elastomer spring suspension for shock absorption
- Foam padding for ultimate comfort
- Extra Wide profile design to maximize support area
- Weather resistant cover with abrasion-resistant side material
- Steel rails
- Weight: 899 grams
- Size: 280 x 270mm

## COMFORT WEB SPRING



### Relief spring saddle

- Web spring base with coil spring suspension for maximum shock absorption
- Wide profile design to maximize support area
- Foam padding for maximum comfort and support
- Center recess for comfortable anatomic relief
- Weather resistant cover with abrasion-resistant side material
- Steel rails
- Weight: 807 grams (women's) / 751 grams (men's) / 1087 grams (unisex)

Gender	Part #	Size
Men's	5003	278 x 190mm
Women's	5002	255 x 215mm
Unisex	5004	260 x 250mm

## COMFORT CLASSIC



### Relief saddle

- Sit-bone foam padding relieve pressure from soft tissue
- Center recess for anatomic relief
- Weather resistant cover with abrasion-resistant side material
- Steel rails
- Weight: 421 grams (women's) / 399 grams (men's)

Gender	Part #	Size
Men's	5015	267 x 150mm
Women's	5016	255 x 175mm

## COMFORT GEL



### Relief gel saddle

- Sit-bone gel pads plus foam padding relieve pressure from soft tissue
- Center recess for comfortable anatomic relief
- Lycra cover with abrasion-resistant side material
- Steel rails
- Weight: 391 grams (women's) / 393 grams (men's)

Gender	Part #	Size
Men's	5005	270 x 150mm
Women's	5006	250 x 185mm

## LITTLE A.R.S



### Junior bike saddle

- Comes in 3 sizes to fit 16", 20" and 24" wheeled bikes
- Foam padding relieves pressure from soft tissue
- Center recess for comfortable anatomic relief
- Weather resistant cover with abrasion-resistant side material
- Steel rails
- Weight: 271 grams (small), 292 grams (medium), 329 grams (large)

	Part #	Size	Color
Small	5100	203 x 130mm	Black
Small	5101	203 x 130mm	White
Medium	5102	225 x 135mm	Black
Medium	5103	225 x 135mm	White
Large	5104	245 x 135mm	Black
Large	5105	245 x 135mm	White

## WATERPROOF SADDLE COVER



### Perfect for keeping a saddle dry in rainy weather

- Rip stop coated nylon material provides a waterproof barrier between the elements and your bike seat
- Protects saddle in a downpour and when parked outside
- Reflective strap for increased visibility
- Elastic drawstring creates snug fit
- Neatly stores with hook and loop strap under saddle when not in use

	Part #	Size
Sport	5024	305 x 200mm
Cruiser	5024-1	330 x 280mm

## COMFY COVER



### Anatomic relief pad

- A soft Lycra cover surrounds supportive gel padding
- Center recess for anatomic comfort
- Secures over saddle with drawstring
- Weight: 227 grams (ATB), 315 grams (Hybrid), 343 grams (Cruiser)

	Part #	Size
ATB	5025	280 x 200mm
Hybrid	5026	270 x 250mm
Cruiser	5027	290 x 270mm

## BIG + LITTLE BUDDY



### 80 & 44 cu. in. seat bags

- Seat bags will hold your repair kit, a spare tube, cell phone, snacks and more
- Low profile design secures snugly and easily under your saddle
- The beefy zipper holds up to years of wear and tear
- White liner makes finding items easy
- Internal padded interior protects cargo
- Reflective piping and light strap on back
- Rear facing tab for mounting tail light

	Part #	Size
<b>Big Buddy</b>	9021-1	80 cu. in.
<b>Little Buddy</b>	9020 -1	44 cu. in.

## SNACK SACK + LUNCH BOX



### 43 & 74 cu. in. top tube bags

- The top tube bags are ideal for ride snacks, phone, keys, wallet, first aid kit and more
- Hassle free pull tabs and dual zipper leash makes opening easy
- Clear protective pouch holds smartphone on top of bag for easy visibility (lunch box only)
- White liner makes finding items easy
- Internal padding protects cargo
- Reflective piping
- Weight: 86 grams [9022], 115 grams [9123]

	Part #	Size
<b>Snack Sack</b>	9022	43 cu. in.
<b>Lunch Box</b>	9123	74 cu. in.

## LUNAR LEVERS (1004)



### Tire levers and flat repair kit

- Super strong, ergonomic nylon levers are designed to easily pry off tires
- Includes three Skab™ self-adhesive patches and abrading square
- Snap-together design fits compactly inside seat bag

## PATCH KIT



### Bike tire repair kit

- Includes: 6 Skab™ self-adhesive patches, abrading square, repair instructions and case
- Designed to restock the Planet Bike lunar levers (model 1004) or for use on their own
- Part # 1004-2 – single on header card (wall display)
- Part # 1004-4 – 32 pack POP (counter display)



# CYCLING GLOVES + SHOE COVERS



From summer to winter and every temperature in-between our gloves and shoe covers make sure your hands and feet are protected and comfortable.

## BOREALIS



### Half lobster cold weather cycling gloves

- Style: Half lobster
- Color: Black and Grey
- Padding: 2mm foam
- Season: spring, fall and winter

#### Material:

- Windproof backing and forchettes for superior warmth
- Synthetic serino palm is reinforced for water resistance, durability and superior grip
- Soft fleece wiping surface on thumb
- Reflective piping for greater night time visibility
- Micro fleece inner lining for comfort and warmth
- Full fleece inner glove is removable for quick drying
- Closure: Neoprene cuff with hook and loop

Unisex	Size
9004-S	Small
9004-M	Medium
9004-L	Large
9004-XL	Extra Large
9004-XXL	Extra Extra Large

## AQUILO



### Half lobster cool weather cycling gloves

- Style: Half lobster
- Color: Black and Grey
- Padding: 2mm gel pad
- Season: spring, fall and winter

#### Material:

- Windproof four-way stretch backing and forchettes for superior fit and warmth
- Synthetic leather palm is reinforced for durability and superior grip and handlebar feel
- Soft fleece wiping surface on thumb and index finger
- Reflective piping for greater night time visibility
- Micro fleece inner lining for comfort and warmth
- Closure: Neoprene cuff with hook and loop

Unisex	Size
9005-S	Small
9005-M	Medium
9005-L	Large
9005-XL	Extra Large

## ORION



### Full-finger 3 season cycling gloves

- Style: Full finger
- Color: Black and Grey
- Padding: 3mm foam
- Season: spring, summer and fall

#### Material:

- Spandex backing and lycra forchettes for superior fit
- Ventilated mesh panel for increased cooling
- Synthetic leather palm is reinforced for durability and superior grip and handlebar feel
- Soft low-profile terry cloth wiping surface on thumb
- Closure: Neoprene cuff with hook and loop

Unisex	Size
9003-XS	Extra Small
9003-S	Small
9003-M	Medium
9003-L	Large
9003-XL	Extra Large

## GEMINI



### Comfort cycling gloves

- Style: Half finger
- Color: Grey and Black
- Padding: 7mm dual foam
- Season: Warm weather

#### Material:

- Lycra backing and forchettes for superior fit and cool comfort
- Synthetic leather palm is reinforced for durability and superior grip and handlebar feel
- Soft low-profile terry cloth wiping surface on thumb and index finger
- Reflective piping for greater night time visibility
- Tricot inner lining for comfort
- Closure: Neoprene cuff with hook and loop

Unisex	Size
9002-XS	Extra Small
9002-S	Small
9002-M	Medium
9002-L	Large
9002-XL	Extra Large

## ARIES



### Performance light cycling gloves

- Style: Half finger
- Color: Royal Blue and Black
- Padding: 1mm foam
- Season: Warm weather

#### Material:

- Lycra backing and forchettes for superior fit and cool comfort
- Synthetic leather palm with venting is reinforced for superior grip comfort and handlebar feel
- Soft low-profile terry cloth wiping surface on thumb and index finger
- Easy-Off Glove Removal Tab
- Tricot inner lining for comfort
- Closure: hook and loop

Unisex	Size
9001-XS	Extra Small
9001-S	Small
9001-M	Medium
9001-L	Large
9001-XL	Extra Large

## TAURUS



### Crochet leather cycling gloves

- Style: Half finger
- Color: Natural cotton mesh and tan leather palm
- Padding: 5mm foam
- Season: Warm weather

#### Material:

- Leather palm and thumb are soft and durable
- Cotton crochet mesh backing is breathable and absorbent
- Soft low-profile terry cloth wiping surface on thumb
- Kevlar palm reinforcement
- Lycra forchettes provide cool comfort and superb fit
- Tricot inner lining for comfort
- Closure: hook and loop

Unisex	Size
9000-XS	Extra Small
9000-S	Small
9000-M	Medium
9000-L	Large
9000-XL	Extra Large

## BLITZEN



### Windproof cycling shoe covers

- Full shoe covers utilize windproof fabric and microfleece lining for optimal wind protection and warmth
- Neoprene front panel for added warmth around the toe box and water resistant lower panels with “D-ring” for use with gators
- Full hook and loop back closure provide an easy on and off design, sleek fit and greater adjustability and sizing
- Toe box retention strap keeps front of cover in place
- Reflective side logos and back panel for greater night time visibility
- Season: spring, fall and winter

Unisex	Size
9105-S	Small
9105-M	Medium
9105-L	Large
9105-XL	Extra Large
9105-XXL	Extra Extra Large
9105-XXXL	Extra Extra Extra Large

## COMET



### Full neoprene cycling shoe covers

- Full neoprene shoe covers for warmth and wind resistance
- Full hook and loop back closure provide an easy on and off design, sleek fit and greater adjustability and sizing
- Toe box retention strap keeps front of cover in place
- Reflective side logos and back panel for greater night time visibility
- Season: spring, fall and winter

Unisex	Size
9104-S	Small
9104-M	Medium
9104-L	Large
9104-XL	Extra Large
9104-XXL	Extra Extra Large

## DASHER



### Windproof cycling toe covers

- Windproof fabric with microfleece lining for warmth and wind resistance
- Elastic heel strap and elastic edging provide an easy on and off design and a snug fit
- Designed for road or mountain bike shoe compatibility.
- Reflective side and back logos for greater night time visibility
- Season: spring and fall

Unisex	Size
9103-S	Small
9103-M	Medium
9103-L	Large
9103-XL	Extra Large
9103-XXL	Extra Extra Large

# HANDLEBAR TAPE AND GRIPS + BIKE BELLS

Our tape, grips and bells help personalize your handlebars. With multiple color, texture and sound options you can choose the level of comfort and courtesy on your next ride. After all, who doesn't like to give their bike a little extra flair?

## Bar Tape Features:

- UV protected colors
- Adhesive backing for easy installation
- Great grip in all weather conditions

## Bell Features:

- 360 degree rotation
- Fits bar diameters 22.3mm – 26.0mm



## COMFORT CORK TAPE WITH GEL



### Gel infused handlebar tape with cork flecks

- E.V.A. foam tape with real cork flecks
- Gel infused adhesive backing make wrapping and rewinding a snap
- Includes: 2 full length strips, 2 short brake lever strips, 2 finishing strips, bar end plugs, 3mm hex wrench
- Available in 16 UV-protected colors

Part#	Colors	Part#	Colors
5076	Noche Suave	5091	Celeste Green w/ cork
5077	Cream	5092	Orange w/ cork
5078	British Royal Green	5093	Bright Green
5080	Black w/ cork	5094	Pink w/ cork
5081	White w/ cork	5096	Violet w/ cork
5082	Blue w/ cork	5097	Earth w/cork
5083	Red w/ cork	5098	Charcoal w/ cork
5084	Yellow w/ cork	5099	Sky Blue w/ cork

## ROAD WRAP (5060)



### Stitched retro handlebar tape

- Synthetic velvet with center-raised stitching increases bar control
- Retro stitching and holes add vibration dampening air pockets
- Adhesive backing makes wrapping a snap
- Includes: 2 full length strips, 2 short brake lever strips, 2 finishing strips, bar end plugs, 3mm hex wrench
- Dual direction installation can create a mostly black or black and grey look
- UV-protected black and grey two tone color

## ROAD WRAP TACHYON



### No slip handlebar tape

- Rubber outer coating for control and E.V.A. foam under layer for ultimate shock absorption
- Gel infused adhesive backing make wrapping and rewinding a snap
- Tacky in wet and dry conditions for a better grip
- Includes: 2 full length strips, 2 short brake lever strips, 2 finishing strips, bar end plugs, 3mm hex wrench
- Available in 6 UV-protected colors

Part#	Colors
5061	Black
5062	White
5063	Red
5064	Blue
5065	Day Glow Yellow
5066	Reflective Black

## CENTURY GEL PADS (5079)



### Handlebar gel pads

- Four gel pads for under bar tape
- Dampens vibrations
- Maximizes comfort in all hand positions
- For superior comfort use with Planet Bike handlebar tape

## BAR END PLUGS (5080-1)



### Bar end plugs

- Expandable 3mm hex cinch bolt to keep your handlebar tape in place
- Fits standard diameter handlebars with inner diameter of 18-25mm
- Easy install with included 3mm hex wrench



## CORKY GRIPS (5057)



### Handlebar grips

- 100% natural Cork
- Ergonomic shape is classic and elegant
- Dampens vibrations
- Natural cork wicks away sweat
- Uncoated natural tan color
- Length: 125mm

## DIAMOND JOE (5055)



### Happy Hands grips

- Ergonomic shape and durable synthetic rubber construction give optimum anti-slip control
- Tacky diamond cut patterned texture provide superior vibration dampening
- Installation is easy with a single lock-on alloy clamping collar with included hex wrench
- Designed to fit any standard straight bicycle handlebar with an outer diameter between 20-22mm
- Size: 133mm length, 31.75mm diameter
- Weight: 94 grams

## GRIP-E (5056)



### Happy Hands grips

- We designed the Grip-E for e-bike cyclists who spend most of their time pedaling in a seated position
- Ergonomic shape with broad palm surface prevents fatigue and provides optimum anti-slip control
- Gel and triple density synthetic rubber and fingertip micro texture design provide superior vibration dampening
- Installation is easy with a single lock-on alloy clamping collar with included hex wrench
- Designed to fit any standard straight bicycle handlebar with an outer diameter between 20-22mm
- Size: 132mm length, 32mm diameter, 42mm palm platform
- Weight: 134 grams

## DURA CORK (5058)



### Happy Hands grips

- Ergonomic shape and durable cork/ rubber construction give optimum anti-slip control
- Soft & ribbed patterned texture provide superior vibration dampening and increase comfort
- Installation is easy with a single lock-on alloy clamping collar with included hex wrench
- Designed to fit any standard straight bicycle handlebar with an outer diameter between 20-22mm
- Size: 130mm length, 31.75mm diameter
- Weight: 102 grams



## COURTESY BELL CLASSIC



### “Passing on your left”

- Elegant with a beautiful tone
- 360° dinger rotation
- High fatigue spring
- Fits bar diameters 22.3mm – 26.0mm

Part#	Colors
6026	Brass
6027	Silver

## COURTESY BELL



### “Passing on your left”

- Brass bell for clean sound
- 360° dinger rotation
- High fatigue spring
- Fits bar diameters 22.3mm – 26.0mm

Part#	Colors
6020	Silver
6021	Brass

## COURTESY FLEXI BELL (6028)



### “Passing on your left”

- Stretch strap mount quickly and securely attaches to bars or stem
- Diminutive size won't clutter up your handlebars
- Light weight brass bell has a clean sound
- Fits diameters 16mm – 42mm
- 360° dinger rotation for perfect positioning
- High fatigue spring

# BIKE RACKS + WATER BOTTLE CAGES

Our racks and cages allow you to expand your horizons by carrying more and going farther. After all, isn't it more fun to go from A to B when you can carry something with you?



## K.O.K.O. RACK



### Our top-of-the-line rear rack

- Oversized, 6061 tubular aluminum construction for strength and stability
- Pre-installed stainless steel mounting hardware for quick, hassle-free installation
- Includes alternate mounting stays to fit most frame sizes
- Flat cargo deck for oversized loads
- Rear reflector/tail light mounting plate allows the use of the #3108 rack bracket to mount most Planet Bike tail lights
- Fits 26", 650b, 700c, and 29" bikes
- Load capacity 55lbs
- Weight: 662 grams

Part#	Colors
4005	Black
4005-4	Silver

## VERSA RACK (4004)



### Disc brake compatible rear rack

- Oversized, 6061 tubular aluminum rod for maximum strength and stability
- Pre-installed stainless steel hardware for quick, hassle-free installation
- Includes alternate mounting stays to fit most frame sizes
- Adjustable upper and lower mount points for easy leveling and installation.
- Rear reflector/tail light mounting plate allows the use of the #3108 rack bracket to mount most Planet Bike tail lights
- Fits 26", 650b, 700c, and 29" bikes
- Gloss Black
- Load capacity 55lbs
- Weight: 675 grams

## ECO RACK



### Aluminum rear rack

- Oversized, 6061 tubular aluminum rod for maximum strength and stability
- Pre-installed stainless steel hardware for quick, hassle-free installation
- Open side rails for adjustable pannier positioning and maximum heel clearance
- Rear reflector/tail light mounting plate allows the use of the #3108 rack bracket to mount most Planet Bike tail lights
- Fits 26", 650b, 700c, and 29" bikes
- Load capacity 55lbs
- Weight: 648 grams

Part#	Colors
4001	Black
4002	Silver

## CARBON CAGE (4012)



### Featherlight carbon cage

- Carbon fiber construction
- Bottle tab holds bottle securely
- Bolt on mounting
- Natural carbon finish
- Weight: 22 grams

## CARBON SIDELOAD CAGE (4033)



### Carbon cage for compact frame geometries

- Carbon fiber construction
- Perfect for smaller frames and compact frame geometries
- Bolt on mounting
- Natural carbon finish
- Weight: 22 grams

## AIR 18 CAGE



### 18 gram water bottle cage

- Cold forged, single body aluminum construction
- Tapered arms for easy water bottle access
- Bolt on mounting
- Weight: 18 grams

## STAINLESS CAGE (4015)



### Stainless steel cage

- 4.5mm tubular 304 stainless steel construction
- Bolt on mounting
- Natural brushed stainless finish
- Weight: 44 grams

Part#	Colors
4021	Black
4022	Grey
4023	Silver

## SIDELOAD CAGE



### Aluminum cage for compact frame geometries

- Cold forged, single body aluminum construction
- Bolt on mounting
- Weight: 41 grams

Part#	Colors
4031	Black
4032	Silver

## BUTTON CAGE



### Tubular aluminum cage with Hold-Tight™ buttons

- 6mm tubular alloy construction
- Hold-Tight™ non-marking buttons for easy entry/exit of bottle
- Bolt on mounting
- Weight: 57 grams

Part#	Colors
4013	Black
4014	Silver

## PB CAGES



### Aluminum cage

- 6061 6.2mm aluminum construction
- Bolt on mounting
- Available in 10 colors
- Weight: 63 grams

Part#	Colors
4006	Flat Black
4007	Silver
4008	Red
4009	Blue
4010	White
4011	Gloss Black
4016	Yellow
4017	Celeste Green
4018	Blue Anodized
4019	Red Anodized



## WARRANTY STATEMENT

We are so confident in the quality of our products that we offer a limited lifetime warranty to the original owner on all Planet Bike products. Warranty does not cover damage due to accident, abuse, or normal wear and tear. Proof of purchase is required. Contact your Planet Bike Bicycle Dealer or Planet Bike. NOTE: all lithium rechargeable lights carry a two year warranty.

## PRODUCT QUALITY STATEMENT

We don't cut corners when we produce Planet Bike products. To assure you of top performance in all conditions, we use only the best materials and subcomponents.

2402 Vondron Road  
Madison, WI 53718  
[www.planetbike.com](http://www.planetbike.com)

Toll Free: 866. 256. 8510  
Phone: 608. 256. 8510

