



GRUNGE FRONT FENDER INSTRUCTIONS FOR MODEL 7036

Thanks for buying these Planet Bike fenders. We design them to make you want to steer your bike towards big puddles and get through them with a smile. Failure to follow installation instructions can result in loss of control, damage, personal injury or death. If you are unsure of any part of the installation process, please consult a qualified bicycle mechanic or local bike shop. If you have any questions regarding installation of the fenders, feel free to check out the FAQs at www.planetbike.com or email us at info@planetbike.com.



For the most up to date
installation instructions go to
www.planetbike.com

GOOD GEAR GUARANTEE

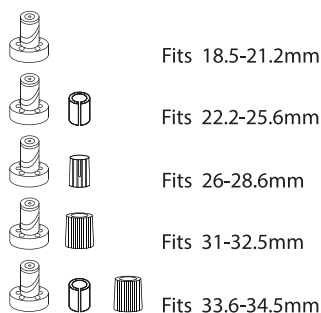
We make quality products and they include a limited lifetime warranty to the original owner of our products. These fenders are warranted to be free from defects in materials and workmanship for as long as the original purchaser owns the product. This warranty does not cover damage due to accident, abuse, or normal wear and tear. This warranty is void if the fenders or fender mounting hardware are modified, or are not properly installed on a bicycle for which they were designed. To make a claim under this warranty, return the fenders together with proof of purchase, to the retail dealer from which they were purchased, or contact Planet Bike directly.

Purchaser's sole remedy pursuant to this warranty is for Planet Bike to repair or replace the faulty part(s). Planet Bike provides no other warranty, expressed or implied. This warranty gives you specific legal rights; you may also have other rights which vary from state to state.

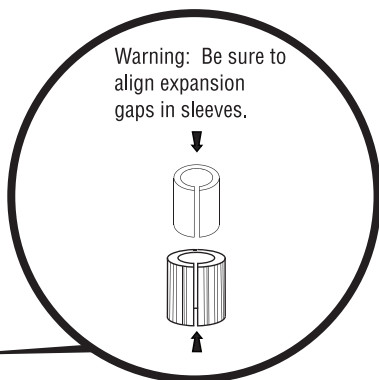


GRUNGE FRONT FENDER INSTALLATION

STEP 1



Warning: Be sure to
align expansion
gaps in sleeves.



FOR SUSPENSION OR RIGID FORKS

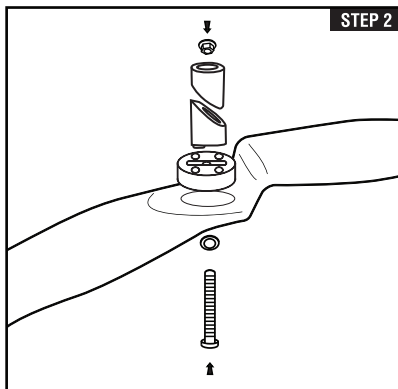
STEP 1: Your Grunge front fender comes with 5 different mounting bracket options to fit a range of fork steerer tube sizes. Determine the correct size base bracket and sleeve combination for your fork.

STEP 2: Assemble the base bracket as shown in step 2. Next, slide the appropriate size sleeve(s) overtop of the base bracket.

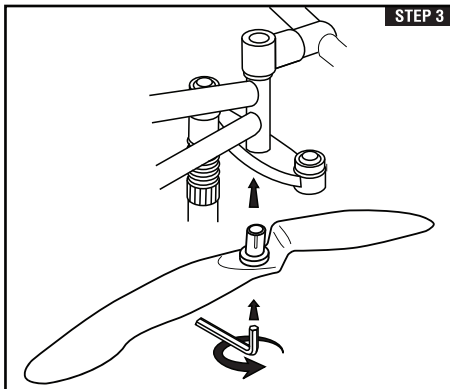
STEP 3: Remove front wheel to make installations easier. With the base bracket assembled and the appropriate size sleeve in place, insert base bracket and sleeve into the underside of the fork steerer tube and align with the tire. Tighten bolt with the included Allen wrench and check to make sure the fender is mounted securely and does not rotate. Tighten to 45Inlbs or 5.1Nm.

STEP 4: Reinstall wheel and check fender alignment. If needed, loosen fender and realign fender over center of tire and retighten. Check complete installation to ensure hardware is tight and there is a minimum of 2 inches of clearance between the tire and the fenders

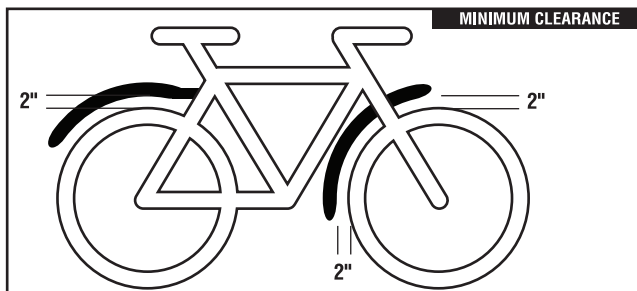
STEP 2



STEP 3



MINIMUM CLEARANCE



WARNINGS

- Check toe overlap (touching your pedal/foot on the fender or wheel while turning handlebars). If there is interference between your toe and front wheel, we do not recommend using the fender.
- Check for interference with other bike components, especially brakes, drive train, and suspension forks. If interference is present readjust fender. If interference remains, do not use the fender.
- There must be a minimum clearance of 2 inches between the tire and fender. If you do not have this clearance, fender use is not recommended.
- Failure to follow installation instructions can result in loss of control, damage, personal injury or death.
- Check fender installation before each ride to ensure hardware is tight and in good condition and fender is centered over tire with a minimum of 2 inches of clearance.
- These fenders are not intended for competitive use or excessive speeds.
- To keep the fenders functioning safely, replace worn parts as needed. Small parts can be found at www.planetbike.com
- **If you are unsure of any part of the installation process please consult a certified bicycle mechanic or local bike shop.**

*For the most up to date installation instructions, go to www.planetbike.com