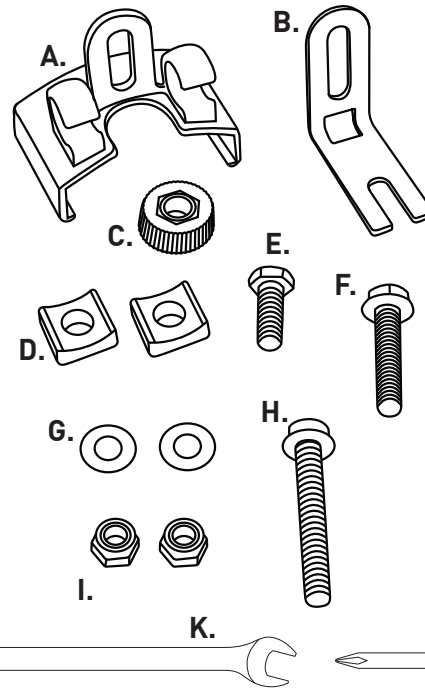


## HARDWARE PACK / TOOLS NEEDED



- A) Plastic clip
- B) Steel hanger
- C) Quick release nut
- D) Plastic concave washers(x2)
- E) 15mm bolt
- F) 30mm bolt
- G) Washers (x2)
- H) 43mm bolt
- I) Lock nut (x2)

Not Included:  
Tools You'll Need for installation  
J) Phillips screw driver  
K) 10mm box wrench

## CLIP-ON FENDERS MOUNTING INSTRUCTIONS FOR MODELS: 7001 & 7002

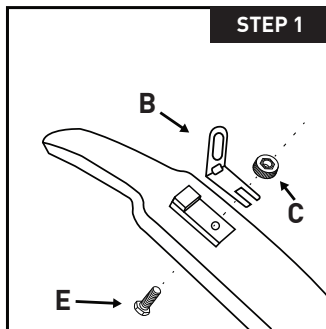


Thanks for buying these Planet Bike fenders. We design them to make you want to steer your bike towards big puddles and get through them with a smile. Failure to follow installation instructions can result in loss of control, damage, personal injury or death. If you are unsure of any part of the installation process, please consult a qualified bicycle mechanic. If you have any questions regarding installation of the fenders, feel free to check out the FAQs at [www.planetbike.com](http://www.planetbike.com) or email us at [info@planetbike.com](mailto:info@planetbike.com).



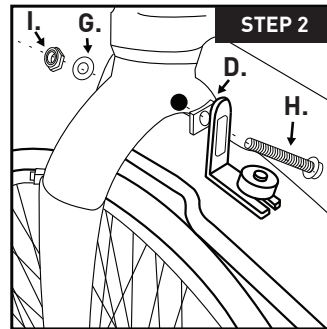
For the most up to date  
installation instructions go to  
[www.planetbike.com](http://www.planetbike.com)

## MOUNTING INSTRUCTIONS

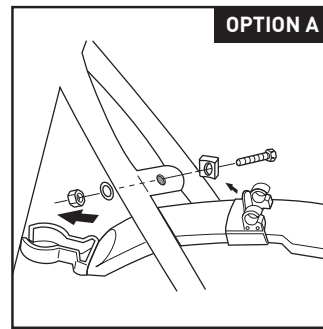


**STEP 1:** Consult the below Tire Reference Guide to confirm you have the correct size fenders for your bike. If your tires are larger than our recommended maximum tire width, do not install fenders.

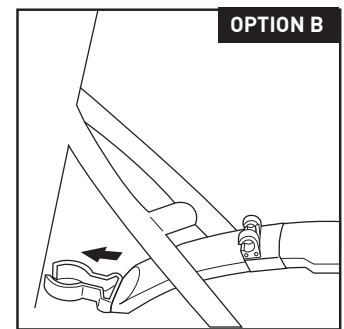
**Mounting Front Fender:** Place steel hanger (B) on front fender and press forward to secure it to the plastic tab. Pass the 15mm hex-head bolt (E) through from underside of front fender. Thread the quick release nut (C) on the bolt to secure the steel hanger to the fender.



**STEP 2:** On the back side of the fork crown, thread the 43mm bolt (H) through the steel hanger and concave washer (D). Secure with lock nut (I) and washer (G).



**STEP 3: Mounting Rear Fender:**  
**OPTION A:** If hole is present on the seat stay bridge, snap plastic clip onto fender as shown above. Attach front of rear fender to seat tube and adjust plastic clip to line up with bridge hole. Secure clip to bridge using 30mm bolt (F), add plastic concave washer (D), flat washer (G) and lock nut (I). You will need to use both a 10mm wrench and screwdriver to tighten bolt.



**OPTION B:** If no hole is present on the seat stay bridge, snap plastic clip (A) onto fender as shown above. Attach front of rear fender to seat tube and adjust plastic clip to line up with seat stay bridge. Secure clamps around bridge. If clamps don't fit snugly, we don't recommend using this fender.

# GOOD GEAR GUARANTEE

We make quality products and they include a limited lifetime warranty to the original owner of our products. These fenders are warranted to be free from defects in materials and workmanship for as long as the original purchaser owns the product. This warranty does not cover damage due to accident, abuse, or normal wear and tear. This warranty is void if the fenders or fender mounting hardware are modified, or are not properly installed on a bicycle for which they were designed. To make a claim under this warranty, return the



fenders together with proof of purchase to the retail dealer from which they were purchased or contact Planet Bike directly. Purchaser's sole remedy pursuant to this warranty is for Planet Bike to repair or replace the faulty part(s). Planet Bike provides no other warranty, expressed or implied. This warranty gives you specific legal rights; you may also have other rights which vary from state to state.

## WARNINGS

- Check overlap (touching your foot on the fender or wheel while turning). If there is interference between your toe and front wheel, we do not recommend using these fenders
- Check for interference with other bike components, especially brakes and drive train. If interference is present readjust fenders. If interference remain, do not use the fenders.
- There must be a minimum clearance of 10mm between the tire and fender. If you do not have this clearance, fender use is not recommended.
- It may be necessary to install narrower tires on your bicycle to create appropriate space between the tires and fenders.
- Any modification to the fender installation instructions is not recommended. Failure to follow installation instructions can result in loss of control, damage, personal injury or death.
- We do not recommend transporting bike with mounted fenders on an automobile or bus bike rack. Forces exerted on fenders at high speeds have the potential of damaging the fenders.
- Check fender installation before each ride to ensure hardware is tight and in good condition and fender is centered over tire with a minimum of 10mm of clearance
- These fenders are not intended for off road riding, competitive use, or excessive speeds.
- To keep the fenders functioning safely, replace worn parts as needed. Small parts can be found at [www.planetbike.com](http://www.planetbike.com)
- **If you are unsure of any part of the installation process please consult a certified bicycle mechanic.**
- For the most up to date installation instructions, go to [www.planetbike.com](http://www.planetbike.com)

## TIRE REFERENCE GUIDE

PB#	Fender Description	Max Tire
#7001	CLIP-ON FENDERS 700 x 45mm	700c x 35mm
#7002	CLIP-ON FENDERS 26" x 70mm	26" x 2.0"