



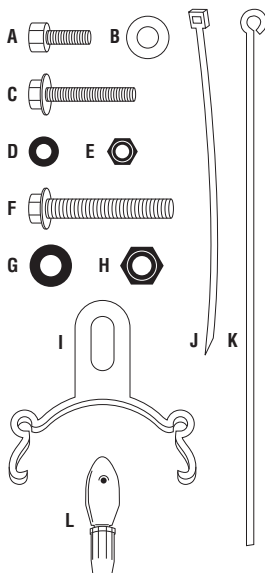
## Recumbent Fender Installation

Thanks for buying these Planet Bike fenders. We design them to make you want to steer your bike towards big puddles and get through them with a smile. Failure to follow installation instructions can result in loss of control, damage, personal injury or death. If you are unsure of any part of the installation process, please consult a qualified bicycle mechanic or local bike shop. If you have any questions regarding installation of the fenders, feel free to check out the FAQs at [www.planetbike.com](http://www.planetbike.com) or email us at [info@planetbike.com](mailto:info@planetbike.com).

**25% of profits to bicycle advocacy™**

For the most up to date installation instructions go to [www.planetbike.com/page/support/manuals](http://www.planetbike.com/page/support/manuals)

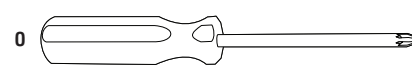
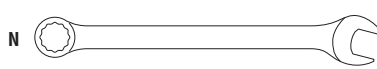
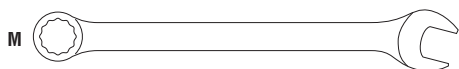
## Hardware Pack / Tools Needed



HARDWARE INCLUDED:	Front Fenders			Rear Fenders		
	7009	7010	7018	7011	7012	7013
<b>A</b> 12 mm silver bolt	2	2	2	2	2	2
<b>B</b> Silver washer	2	2	2	2	2	2
<b>C</b> 25 mm black bolt	0	0	0	1	1	1
<b>D</b> Small black washer	0	0	0	1	1	1
<b>E</b> Small black lock nut	0	0	0	1	1	1
<b>F</b> 43 mm black bolt	1	1	1	0	0	0
<b>G</b> Large black washer	1	1	1	0	0	0
<b>H</b> Large black lock nut	1	1	1	0	0	0
<b>I</b> Rear bridge plastic clip	1	1	1	1	1	1
<b>J</b> Zip ties	2	2	2	2	2	2
<b>K</b> Stays	2	2	2	4	4	4
<b>L</b> Quick clip assembly	2	2	2	4	4	4

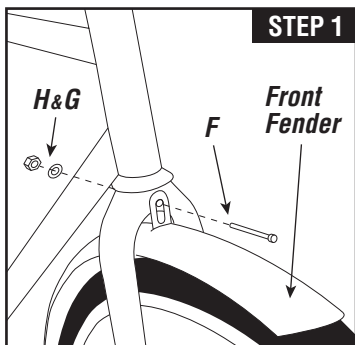
### NOT INCLUDED: TOOLS YOU'LL NEED FOR INSTALLATION

- M** 10mm box/ open end wrench
- N** 8mm box/ open end wrench
- O** Phillips screw driver
- P** Torque wrench (not shown)



## Front Fender Installation

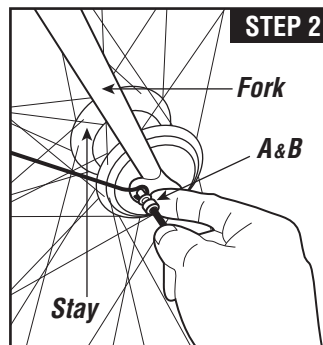
For Models: 7009, 7010, 7018



### STEP 1

**STEP 1:** Confirm you have the correct size front fender for your bike. Stick the 43mm bolt (F) through the attached tab on the front fender, then through the hole in the fork crown. The tab should mount on the front of the fork crown. Secure with lock nut (H) and washer (G) while keeping the fender centered over the tire. Tighten to 45 Inlbs or 5.1 Nm.

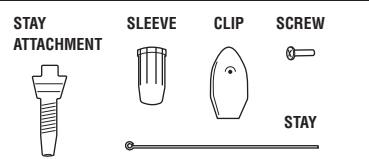
Note: Attaching the tab to the back side of the fork is acceptable if it improves fit.



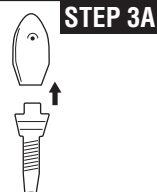
### STEP 2

**STEP 2:** Using the 12mm bolts (A) and washers (B), bolt the stay to the outside of the threaded eyelets on your fork (use lower eyelets if you have two per side). Tighten to 20 Inlbs or 2.3 Nm.

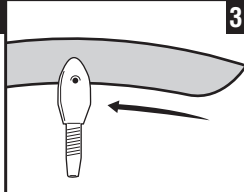
### Quick Clip Assembly Instructions



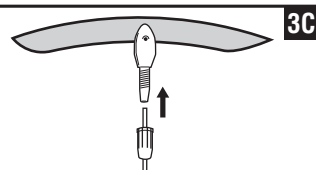
### STEP 3A



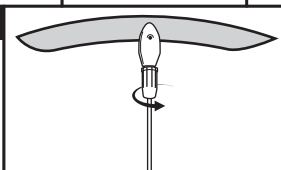
### 3B



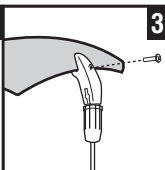
**STEP 3:** Your fenders come with a release feature on the Quick Clips that are designed to release the fender stays from the fender if debris becomes lodged in between tire and the fender. Slide the Quick Clip (L) onto the fender blade and attached the Quick Clip assembly to the stay as seen in step 3 diagram. Position the stay on the fender approx. 80mm from the end of the back edge of the fender. Be sure to have a minimum of 10mm of the stay inside the Quick Clip before tightening sleeve or Quick Clip can become disconnected from stay. It may be necessary to cut stays to length for some installations. Be sure to smooth cut end before reassembling.



### 3C



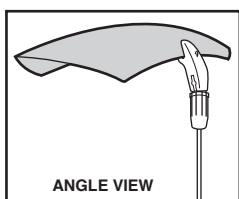
### 3D



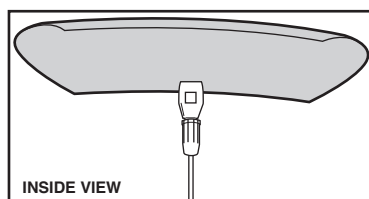
### 3E

Note for disc brakes: If you have disc brakes, and there is interference with the disc brakes, we do not recommend using fenders.

**STEP 4: Front fender adjustment:** With the Quick Clips (L) still loosely installed, position the fender so that it conforms to the curvature of the tire without rubbing. Make sure you have a minimum of 5 millimeters of clearance between the tire and fender. You may have to adjust the height of the tab mounted to the fork crown to achieve this clearance (see step 1). Tighten the bolts, Quick Clip, and Quick Clip screw snugly but don't use all of your strength or you risk breaking the hardware. Check for toe overlap by placing one foot on the pedal positioned at the most forward position. Turn the front wheel. If the tire or fender hits your foot, we do not recommend using these fenders.

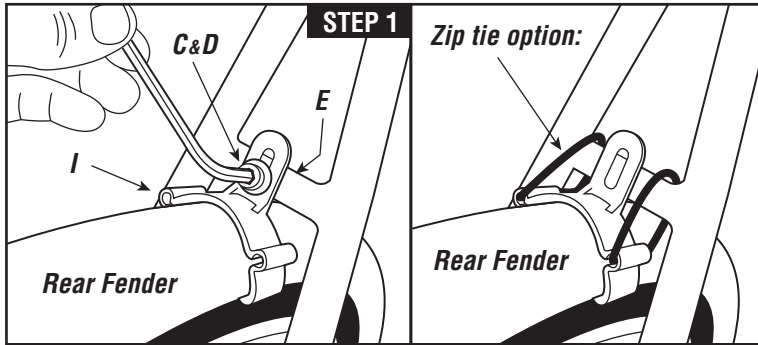


ANGLE VIEW



INSIDE VIEW

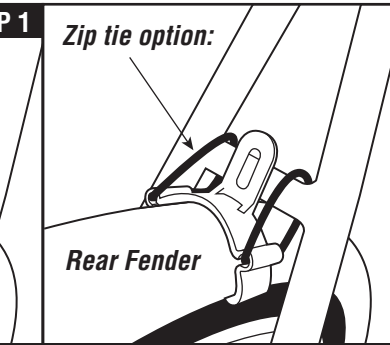
**STEP 5:** Check complete installation to ensure hardware is tight and proper clearance is given between the tire and the fenders.



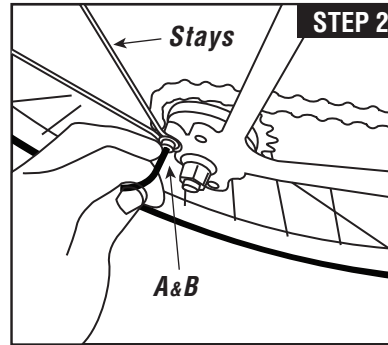
**STEP 1:** Confirm you have the correct size rear fender for your bike.

**Rear fender Installation:** Snap the plastic clip (I) onto the rear fender and bolt it to the brake bridge using the 25mm bolt (C), washer (D) and lock nut (E). Tighten to 45 Inlbs or 5.1 Nm.

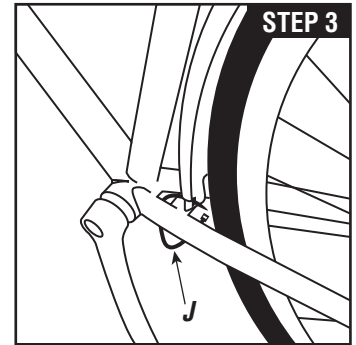
**Zip tie option:** If the bridge has no hole or there is no bridge, thread 2 zip ties through the channels in the plastic clip. Before you firmly tighten the zip ties, proceed through steps 2, 3, and 4.



**STEP 2:** Using two 12mm bolts (A) and two washers (B), bolt the fender stay to the outside of the threaded eyelets on the frame. Tighten to 35 Inlbs or 4 Nm.



**STEP 3:** Attach front of rear fender to chain stay bridge and use zip tie (J) through hole and around the bridge. If your chain-stay bridge has a threaded hole, a bolt can be used. Tighten to 30 Inlbs or 3.4 Nm. Slide the Quick Clip (L) onto the fender blade, two stays per side. Position the stay on the fender approx. 80mm and 330mm from the back edge of the fender. Attach the Quick Clip to the stay as seen in Quick Clip assembly instructions. It may be necessary to cut stays to length for some installations. Be sure to smooth cut end before reassembling.



**STEP 4: Rear fender adjustment:** With the Quick Clips (L) still loosely installed, position the fender so that it conforms to the curvature of the tire without rubbing. Make sure you have a minimum of 5 millimeters of clearance between the tire and fender. Tighten the bolts, Quick Clips, and screws on Quick Clips snugly, but don't use all of your strength or you risk breaking the hardware. Firmly tighten all zip ties (if used). If zip ties do not firmly hold fender in place, do not use fenders.

**STEP 5:** Check complete installation to ensure hardware is tight and proper clearance is given between the tire and the fenders. Don't forget to tighten down the zip ties and cut off the extra.

## Warranty

We make quality products and they include a limited lifetime warranty to the original owner of our products. These fenders are warranted to be free from defects in materials and workmanship for as long as the original purchaser owns the product. This warranty does not cover damage due to accident, abuse, or normal wear and tear. This warranty is void if the fenders or fender mounting hardware are modified, or are not properly installed on a bicycle for which they were designed. To make a claim under this

warranty, return the fenders together with proof of purchase, to the retail dealer from which they were purchased, or contact Planet Bike directly. Purchaser's sole remedy pursuant to this warranty is for Planet Bike to repair or replace the faulty part(s). Planet Bike provides no other warranty, expressed or implied. This warranty gives you specific legal rights; you may also have other rights which vary from state to state.

## Warnings

- Check overlap (touching your foot on the fender or wheel while turning) as described in step 4 of the front fender installation instructions. If there is interference between your toe and front wheel, we do not recommend using these fenders.
- Check for interference with other bike components, especially brakes and drive train. If interference is present readjust fenders. If interference remains, do not use the fenders.
- There must be a minimum clearance of 5mm between the tire and fender for the entire length of the fender. If you do not have this clearance, fender use is not recommended.
- It may be necessary to install a smaller (narrower) tire on your bicycle to create space for fenders between the tires and the bicycle frame.

- Failure to follow installation instructions can result in loss of control, damage, personal injury or death.
- Check fender installation before each ride to ensure hardware is tight and in good condition and fenders are centered over tire with a minimum of 5mm of clearance.
- If Quick Clip is released, inspect for damage. Replace damaged Quick Clips immediately and reassemble clips. Do not use fenders if parts or fenders are worn or damaged.
- These fenders are not intended for off road riding, competitive use, or excessive speeds.
- To keep the fenders functioning safely, replace worn parts as needed. Small parts can be found at [www.planetbike.com/rebuild](http://www.planetbike.com/rebuild)
- **If you are unsure of any part of the installation process please consult a certified bicycle mechanic or local bike shop.**

\*For the most up to date installation instructions, go to [www.planetbike.com/page/support/manuals](http://www.planetbike.com/page/support/manuals)

Planet Bike,  
2402 Vondron Rd  
Madison, WI 53718

