



BIG BUCK INSTRUCTIONS FOR MODELS 7033 & 7034

Thanks for buying these Planet Bike fenders. We design them to make you want to steer your bike towards big puddles and get through them with a smile. Failure to follow installation instructions can result in loss of control, damage, personal injury or death. If you are unsure of any part of the installation process, please consult a qualified bicycle mechanic or local bike shop. If you have any questions regarding installation of the fenders, feel free to check out the FAQs at www.planetbike.com or email us at info@planetbike.com.



For the most up to date installation instructions go to www.planetbike.com/page/support/manuals

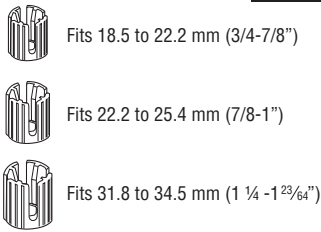
GOOD GEAR GUARANTEE

We make quality products and they include a limited lifetime warranty to the original owner of our products. These fenders are warranted to be free from defects in materials and workmanship for as long as the original purchaser owns the product. This warranty does not cover damage due to accident, abuse, or normal wear and tear. This warranty is void if the fenders or fender mounting hardware are modified, or are not properly installed on a bicycle for which they were designed. To make a claim under this warranty, return the fenders together with proof of purchase, to the retail dealer from which they were purchased, or contact Planet Bike directly. Purchaser's sole remedy pursuant to this warranty is for Planet Bike to repair or replace the faulty part(s). Planet Bike provides no other warranty, expressed or implied. This warranty gives you specific legal rights; you may also have other rights which vary from state to state.

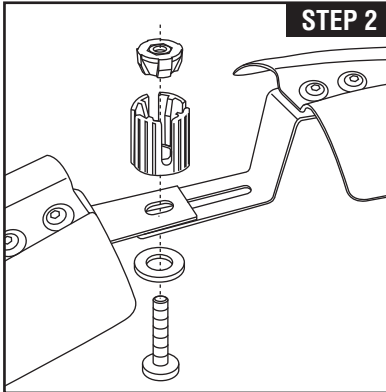


BIG BUCK FRONT FENDER INSTALLATION

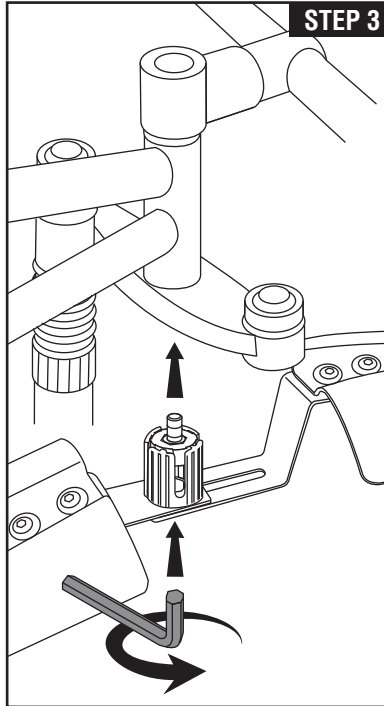
STEP 1



STEP 2



STEP 3



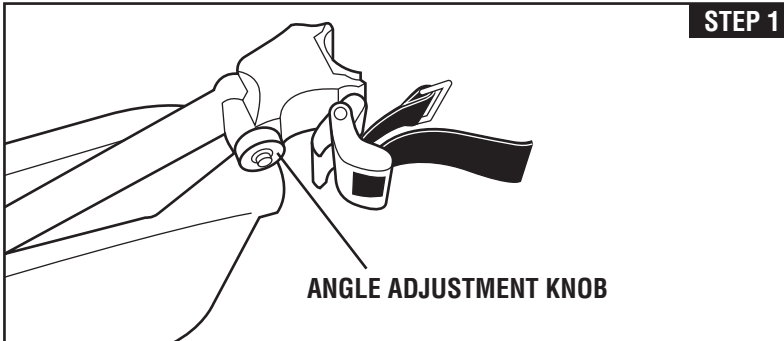
FOR SUSPENSION OR RIGID FORKS

- STEP 1:** Your Big Buck front fender comes with three different sized expansion collars to fit a range of fork steerer tube sizes. Determine the correct size collar for your fork. The most common size (7/8 – 1") comes pre-installed.
- STEP 2:** Assemble collar and fender brackets as shown. Be sure to align raised blocks on bottom of collar with slot on bracket.
- STEP 3:** Remove front wheel to make installation easier. With the fender assembled, insert collar into the underside of the fork head tube and align with the tire. Adjust position of the fore and aft fender components to allow proper fork clearance. Tighten bolt with the included Allen wrench.
- STEP 4:** Reinstall front wheel and check clearance between fender and tire. There must be a minimum of 2 inches between the tire and the fender. If you do not have this clearance, fender use is not recommended.



BIG BUCK REAR FENDER INSTALLATION

STEP 1



ANGLE ADJUSTMENT KNOB

STEP 1: Open Cam lever/strap assembly and lengthen or shorten strap until you achieve a snug fit around your seatpost.

STEP 2: You can adjust the angle of the fender by using the knob on the bracket and locating bracket higher or lower on the seatpost. Be sure to have a minimum of 2 inches of clearance between fender and tire.

Note, for a clean look, extra strap can be folded back into bracket.

WARNINGS

- Check toe overlap (touching your pedal/foot on the fender or wheel while turning handlebars). If there is interference between your toe and front wheel, we do not recommend using these fenders.
- Check for interference with other bike components, especially brakes, drive train, and suspension forks. If interference is present readjust fenders. If interference remains, do not use the fenders.
- There must be a minimum clearance of 2 inches between the tire and fender. If you do not have this clearance, fender use is not recommended.
- Failure to follow installation instructions can result in loss of control, damage, personal injury or death.
- Check fender installation before each ride to ensure hardware is tight and in good condition and fender is centered over tire with a minimum of 2 inches of clearance.
- These fenders are not intended for competitive use or excessive speeds.
- To keep the fenders functioning safely, replace worn parts as needed. Small parts can be found at www.planetbike.com/rebuild
- **If you are unsure of any part of the installation process please consult a certified bicycle mechanic or local bike shop.**

*For the most up to date installation instructions, go to www.planetbike.com/page/support/manuals