



SpeedEZ Installation Instructions

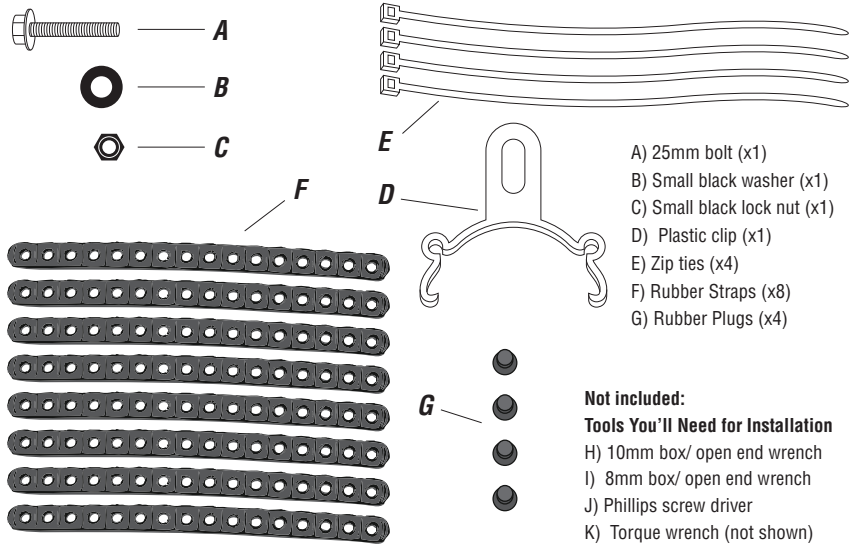
For Models:
7015, 7016

Thanks for buying these Planet Bike fenders. We design them to make you want to steer your bike towards big puddles and get through them with a smile. Failure to follow installation instructions can result in loss of control, damage, personal injury or death. If you are unsure of any part of the installation process, please consult a qualified bicycle mechanic or local bike shop. If you have any questions regarding installation of the fenders, feel free to check out the FAQs at www.planetbike.com or email us at info@planetbike.com.



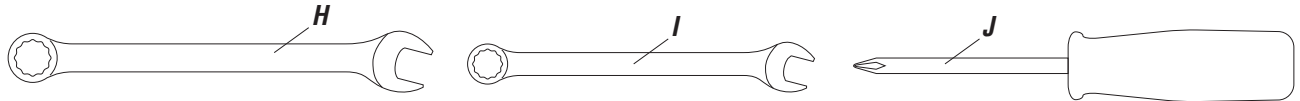
For the most up to date installation instructions go to www.planetbike.com/page/support/manuals

Hardware Pack / Tools Needed

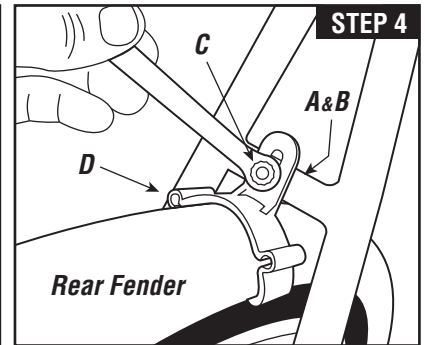
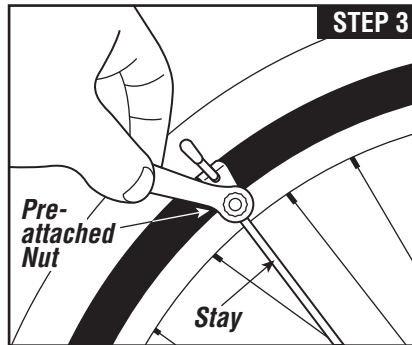
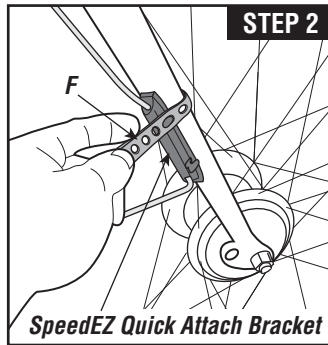
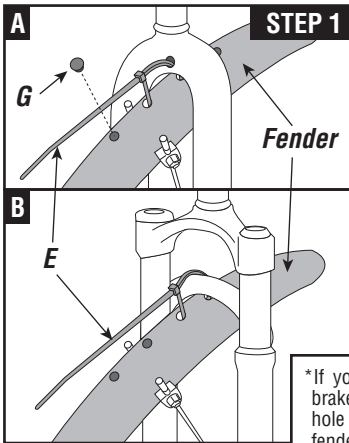


- A) 25mm bolt (x1)
- B) Small black washer (x1)
- C) Small black lock nut (x1)
- D) Plastic clip (x1)
- E) Zip ties (x4)
- F) Rubber Straps (x8)
- G) Rubber Plugs (x4)

- Not included:**
Tools You'll Need for Installation
 H) 10mm box/ open end wrench
 I) 8mm box/ open end wrench
 J) Phillips screw driver
 K) Torque wrench (not shown)



Mounting Instructions



*If you do not have a brake bridge or center hole for securing the fender with zip tie, do not use these fenders.

STEP 1: FRONT FENDER*

Confirm you have the correct size fenders for your bike.

A) For Rigid Forks: Secure the fender to the fork by threading a zip tie (E) through the two center holes in the fender and through the center holes in the fork. Plug unused holes with rubber plugs (G).

B) For Suspension Forks: Secure the fender to the fork by threading a zip tie (E) through the front two holes in the fender and around the fork brake bridge (for reverse fork bridges, use rear set of holes). Plug unused holes with rubber plugs (G).

STEP 2: Position the front fender snugly against the fork crown/bridge. Then, attach SpeedEZ Quick Attach Brackets to the fork legs by wrapping rubber straps (F) around fork legs and looping over bracket hooks. Be sure to pull firmly on straps for a secure fit.

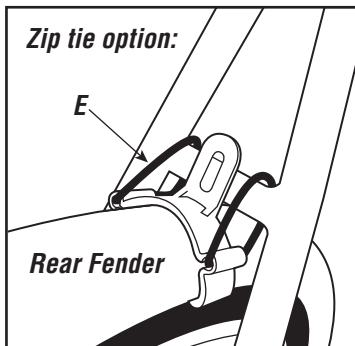
Note: For excess portion of rubber straps, either A) Double over and loop onto outside hooks or, B) Cut off excess making sure to leave enough strap for future removal and installation.

STEP 3: Front fender adjustment: Loosen the 10mm nuts that attach the stays to the front fender and position the fender so that it conforms to the curvature of the tire without rubbing. Make sure you have a minimum of 5 millimeters of clearance between the tire and fender. It may be necessary to adjust placement of SpeedEZ Quick Attach Brackets to achieve proper fit. Tighten the nuts snugly, but don't use all of your strength or you risk breaking the hardware. (Tighten to 30 Inlbs or 3.4 Nm.) Check for toe overlap by placing one foot on the pedal positioned at the most forward position. Turn the front wheel. If the tire or fender hits your foot we do not recommend using these fenders.

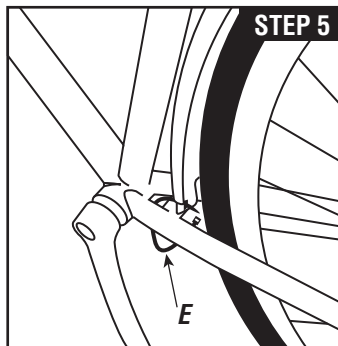
STEP 4: Snap the plastic clip (D) onto the rear fender and bolt it to the brake bridge using the 25mm bolt (A), washer (B) and lock nut (C). (Tighten to 45 Inlbs or 5.1 Nm.)



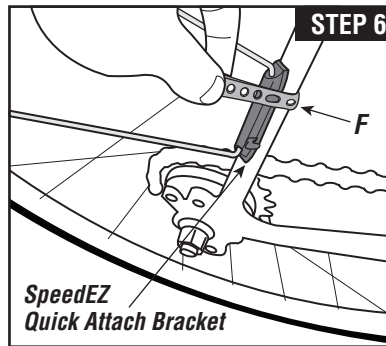
Mounting Instructions



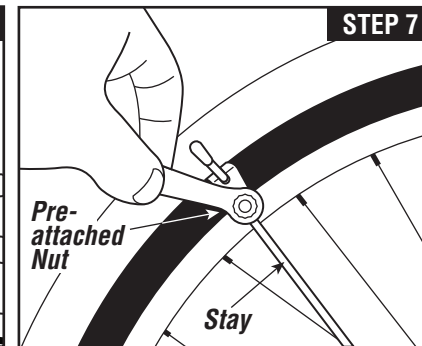
Zip tie option: If the bridge has no hole or there is no bridge, thread 2 zip ties (E) through the channels in the plastic clip. Before you firmly tighten the zip ties, proceed through steps 5, 6, and 7.



STEP 5: Attach front of rear fender to chain stay bridge using zip tie (E) through hole and around the bridge. If your chain-stay bridge has a threaded hole, a bolt can be used.



STEP 6: Attach the SpeedEZ Quick Attach brackets to the seat stays (bike frame) by wrapping rubber straps (F) around the seat stays and looping over bracket hooks. Be sure to pull firmly on straps for a secure fit. Note: for excess portion of rubber straps, either A) Double over and loop onto; outside hooks or B) Cut off excess making sure to leave enough strap for future removal and installation.



STEP 7: Rear fender adjustment: Loosen the 10mm nuts that attach the stays to the fender and position the curvature of the tire without rubbing. Make sure you have a minimum of 5 millimeters of clearance between the tire and fender. It may be necessary to adjust placement of SpeedEZ Quick Attach Brackets to achieve proper fit. Tighten the nuts snugly, but don't use all of your strength or you risk breaking the hardware. (Tighten to 30 lnlbs or 3.4 Nm.) Firmly tighten zip ties on plastic clip near the brake bridge (if used).

STEP 8: Check complete installation to ensure hardware is tight and proper clearance is given between the tire and the fenders. Don't forget to tighten down the zip ties and cut off the extra.

Warranty

We make quality products and they include a limited lifetime warranty to the original owner of our products. These fenders are warranted to be free from defects in materials and workmanship for as long as the original purchaser owns the product. This warranty does not cover damage due to accident, abuse, or normal wear and tear. This warranty is void if the fenders or fender mounting hardware are modified, or are not properly installed on a bicycle for which they were designed. To make a claim under this warranty, return the fenders together with proof of purchase, to the retail dealer from which they were purchased, or contact Planet Bike directly. Purchaser's sole remedy pursuant to this warranty is for Planet Bike to repair or replace the faulty part(s). Planet Bike provides no other warranty, expressed or implied. This warranty gives you specific legal rights; you may also have other rights which vary from state to state.

Warnings

- Check overlap (touching your foot on the fender or wheel while turning) as described in step 3. If there is interference between your toe and front wheel, we do not recommend using these fenders.
- Check for interference with other bike components, especially brakes and drive train. If interference is present readjust fenders. If interference remains, do not use the fenders.
- There must be a minimum clearance of 5mm between the tire and fender. If you do not have this clearance, fender use is not recommended.
- Failure to follow installation instructions can result in loss of control, damage, personal injury or death.

- Check fender installation before each ride to ensure hardware is tight and in good condition and fender is centered over tire with a minimum of 5mm of clearance.
- These fenders are not intended for off road riding, competitive use, or excessive speeds.
- To keep the fenders functioning safely, replace worn parts as needed. Small parts can be found at www.planetbike.com/rebuild
- **If you are unsure of any part of the installation process please consult a certified bicycle mechanic or local bike shop.**

*For the most up to date installation instructions, go to www.planetbike.com/page/support/manuals

Planet Bike,
2402 Vondron Rd
Madison, WI 53718

